

SCENIC AREAS

Jaffrey, New Hampshire

Conservation and Public Lands

- Surface Water
- Streams
 - Perennial
 - Intermittent
- Wetlands (National Wetlands Inventory)

Jaffrey Boundaries

- Municipal Boundaries
- County Boundaries
- Summits

Roads

- Highways
- Local Roads
- Unmaintained Roads

Thorndike Pond Road (designated scenic road)

Scenic View Points

Scenic Areas Analysis

- 0 points
- 1
- 2
- 3
- 4
- 5
- 6
- 7
- 8
- 9
- 10
- 11

SCENIC AREAS ANALYSIS

This map illustrates Jaffrey's scenic locales by showing scenic vistas or viewpoints and scenic landscapes. Viewpoints: Conservation Commission members selected numerous vistas which were felt to contribute significantly to Jaffrey's rural character. From each of these points a certain portion of Jaffrey's landscape can be seen; the area between the arrows on the map can be seen from the viewpoint. These scenic landscapes may be fields, lakes or ponds, wetlands, or forests.

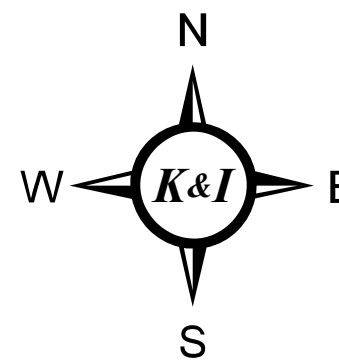
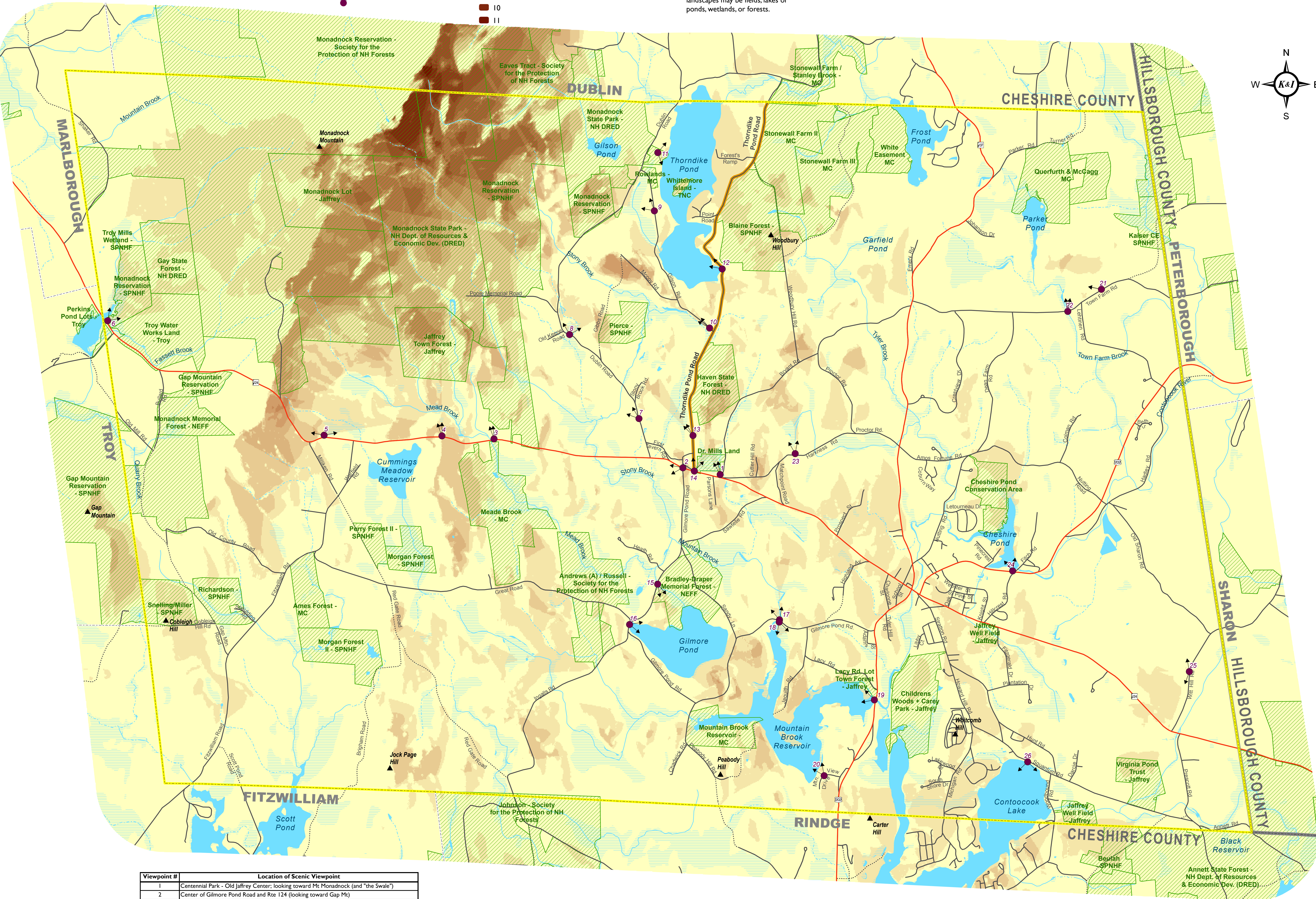
Scenic Areas Analysis: Using a GIS analysis, areas which could be seen from each viewpoint were modeled based on the shape of the landscape. On this map, areas which can be seen from many viewpoints are shown in darker shades of purple; areas which can be seen from fewer points are shown in lighter shades.

DATA SOURCES:

NH GRANIT: All datasets displayed on this map are provided by NH GRANIT unless otherwise noted. Digital data in NH GRANIT represent the efforts of the contributing agencies to record information from the cited source materials. Complex Systems Research Center, under contract to the NH Office of Energy and Planning, and in consultation with cooperating agencies, maintains a continuing program to identify and correct errors in these data. OEP, CSRC, and the cooperating agencies make no claim as to the validity or reliability or to any implied uses of these data.

DISCLAIMER

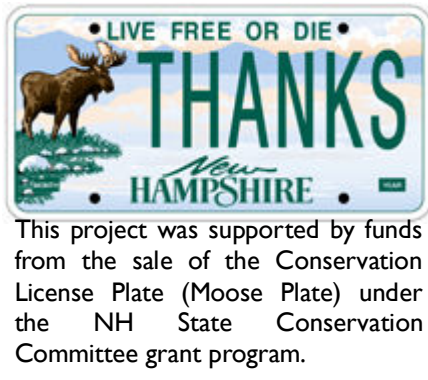
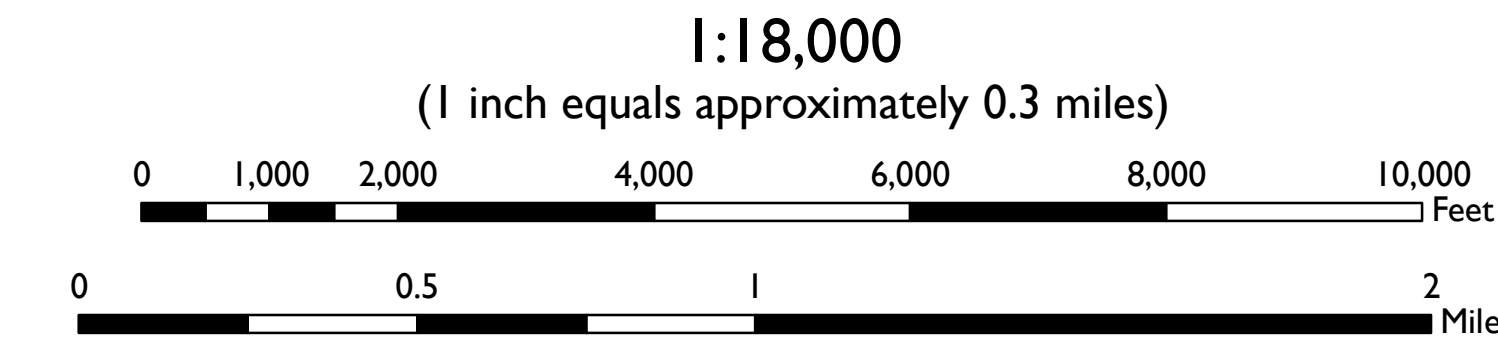
Every reasonable effort has been made to maintain a high level of quality in developing this product. However, the Town of Jaffrey, Christopher Kane, and Peter Ingraham ("The Producers") make no warranties, expressed or implied, concerning the accuracy, completeness, reliability, or suitability of the data displayed on this map. The Producers do not assume any liability associated with the use or misuse of this information. The information depicted on this map is for planning purposes only. It is not adequate for legal boundary definition, regulatory interpretation, or property conveyance purposes.



Viewpoint #	Location of Scenic Viewpoint
1	Centennial Park - Old Jaffrey Center; looking toward Mt Monadnock (and "the Swale")
2	Center of Gilmore Pond Road and Rte 124 (looking toward Gap Mt)
3	296 Mountain Road (Route 124)
4	At horse farm just beyond Joe Hoyt's
5	multiple points overlooking Grandview field
6	Route 124 at Troy line
7	Dublin Road in front of Shattuck
8	Dublin Road in front of Bible Conference
9	Gilson Road (just south of intersection with Dublin Road)
10	Near Jct of Gilson Rd & Thorndike Pond Rd
11	View of Thorndike Pond towards east from Public Beach
12	Thorndike Pond Road at fire pipe on curve
13	View from Melville Academy property (town-owned)
14	View of "Swale" in Jaffrey Center
15	Gilmore Pond outlet under Gilmore Pond Rd
16	Gilmore Pond from fishing beach
17	Gilmore Pond Road at inlet to Mt Brook Reservoir
18	Gilmore Pond Road at inlet to Mt Brook Reservoir
19	View of Mt Brook Reservoir from Dam / Boat access on Rte 202
20	View of Mt Monadnock from Monadnock View Drive
21	View from Town Farm Rd near Richmond Hill Farm
22	View northerly from bridge crossing on Town Farm Rd
23	View from Harkness of wetland with field in foreground
24	View of Cheshire Pond from Bean Dam
25	View of Mount Monadnock to west from Witt Hill Road
26	Contoocook Lake from Squantum Rd/Public Beach

NATURAL RESOURCE INVENTORY
This map is part of a series produced as part of a natural resource inventory for the Jaffrey, NH Conservation Commission. The inventory gives a comprehensive illustration of Jaffrey's natural, cultural, and historic resources to inform land and resource use decisions. The various resources are described in detail in the accompanying document *A Natural and Cultural Resource Inventory and Land Conservation Plan*, produced by Kane and Ingraham and available from the Jaffrey Conservation Commission.

This map was created and published by Kane and Ingraham, April, 2009.



Kane & Ingraham
Conservation
Consultants
6 Donovan Street • Concord, NH 03301
603-848-7572 • www.kiconservancy.com

SCENIC AREAS - Jaffrey, New Hampshire
April 13th, 2009