

TAX PARCELS AND ZONING

Jaffrey, New Hampshire

Jaffrey Boundaries

Municipal Boundaries

County Boundaries

Zoning

General Business

Historic District

Industrial

Mountain

Residence A

Residence B

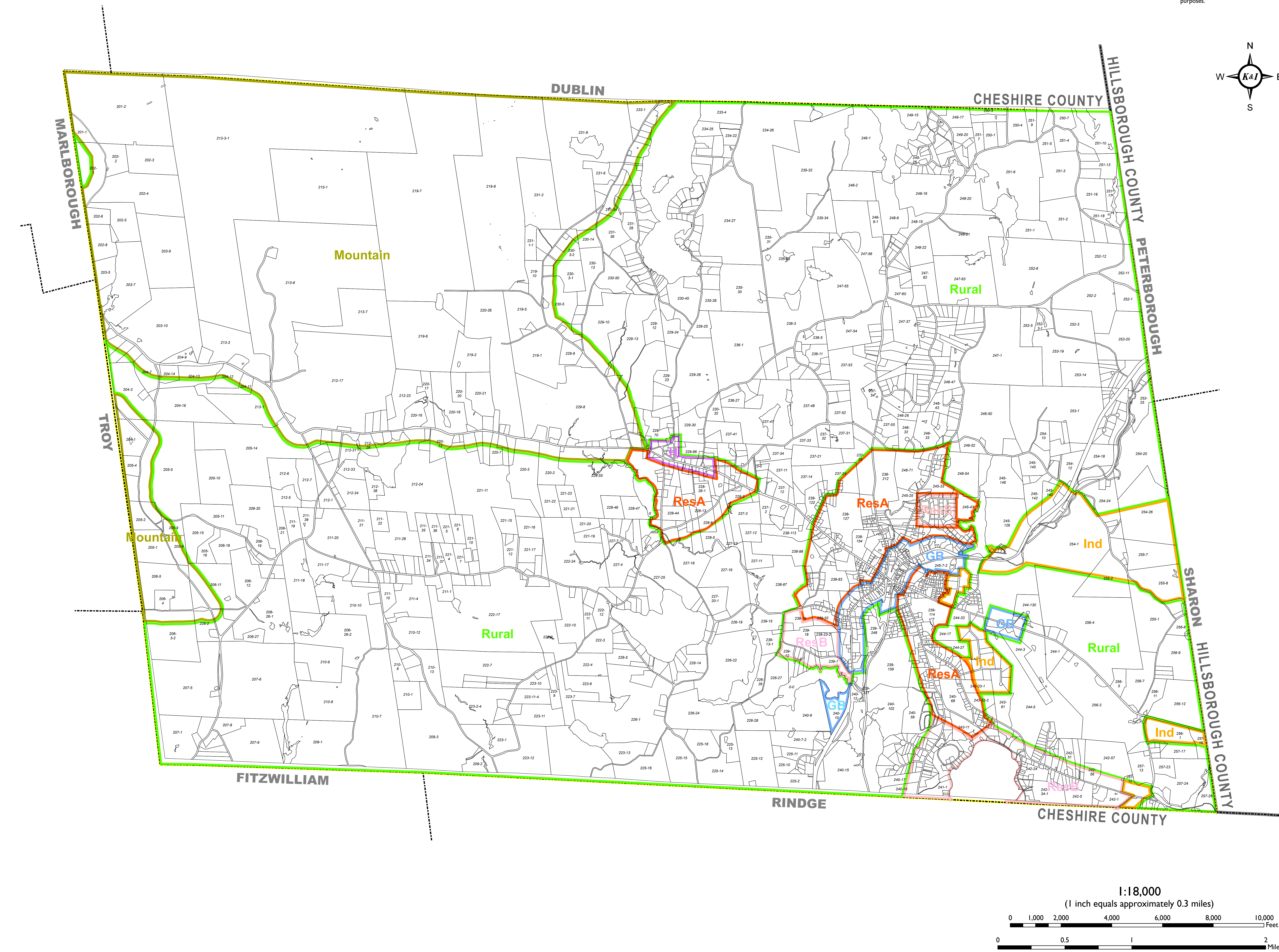
Rural

Parcels

**TAX PARCELS AND ZONING**  
Due to scale limitations, not all tax parcel numbers are shown on this map. Because tax parcel data and town and county boundary data come from different sources, boundary data may not always align precisely with tax parcel data. Tax parcel and zoning data were provided by the Town of Jaffrey and represent the assessors map c.2003.

**DATA SOURCES:**  
**NH GRANIT:** All datasets displayed on this map are provided by NH GRANIT unless otherwise noted. Digital data in NH GRANIT represent the efforts of the contributing agencies to record information from the cited source materials. Complex Systems Research Center, under contract to the NH Office of Energy and Planning, and in consultation with cooperating agencies, maintains a continuing program to identify and correct errors in these data. OEP, CSRC, and the cooperating agencies make no claim as to the validity or reliability or to any implied uses of these data.

**DISCLAIMER**  
Every reasonable effort has been made to maintain a high level of quality in developing this product. However, the Town of Jaffrey, Christopher Kane, and Peter Ingraham ("The Producers") make no warranties, expressed or implied, concerning the accuracy, completeness, reliability, or suitability of the data displayed on this map. The Producers do not assume any liability associated with the use or misuse of this information. The information depicted on this map is for planning purposes only. It is not adequate for legal boundary definition, regulatory interpretation, or property conveyance purposes.



**NATURAL RESOURCE INVENTORY**  
This map is part of a series produced as part of a natural resource inventory for the Jaffrey, NH Conservation Commission. The inventory gives a comprehensive illustration of Jaffrey's natural, cultural, and historic resources to inform land and resource use decisions. The various resources are described in detail in the accompanying document *A Natural and Cultural Resource Inventory and Land Conservation Plan*, produced by Kane and Ingraham and available from the Jaffrey Conservation Commission.

This map was created and published by Kane and Ingraham, April, 2009.

LIVE FREE OR DIE

THANKS

HAMPSHIRE

This project was supported by funds from the sale of the Conservation License Plate (Moose Plate) under the NH State Conservation Committee grant program.

TOWN OF JAFFREY

SEAL

NEW HAMPSHIRE

Kane & Ingraham

Conservation Consultants

6 Donovan Street • Concord, NH 03301

603-848-7572 • [www.kiconservation.com](http://www.kiconservation.com)