

UNFRAGMENTED LANDS

Jaffrey, New Hampshire

Conservation and Public Lands

Surface Water

Streams

Perennial

Intermittent

Wetlands (National Wetlands Inventory)

Jaffrey Boundaries

Municipal Boundaries

County Boundaries

Summits

Roads

Highways

Local Roads

Unmaintained Roads

Unfragmented Lands

100 - 500 acres

501 - 1,000

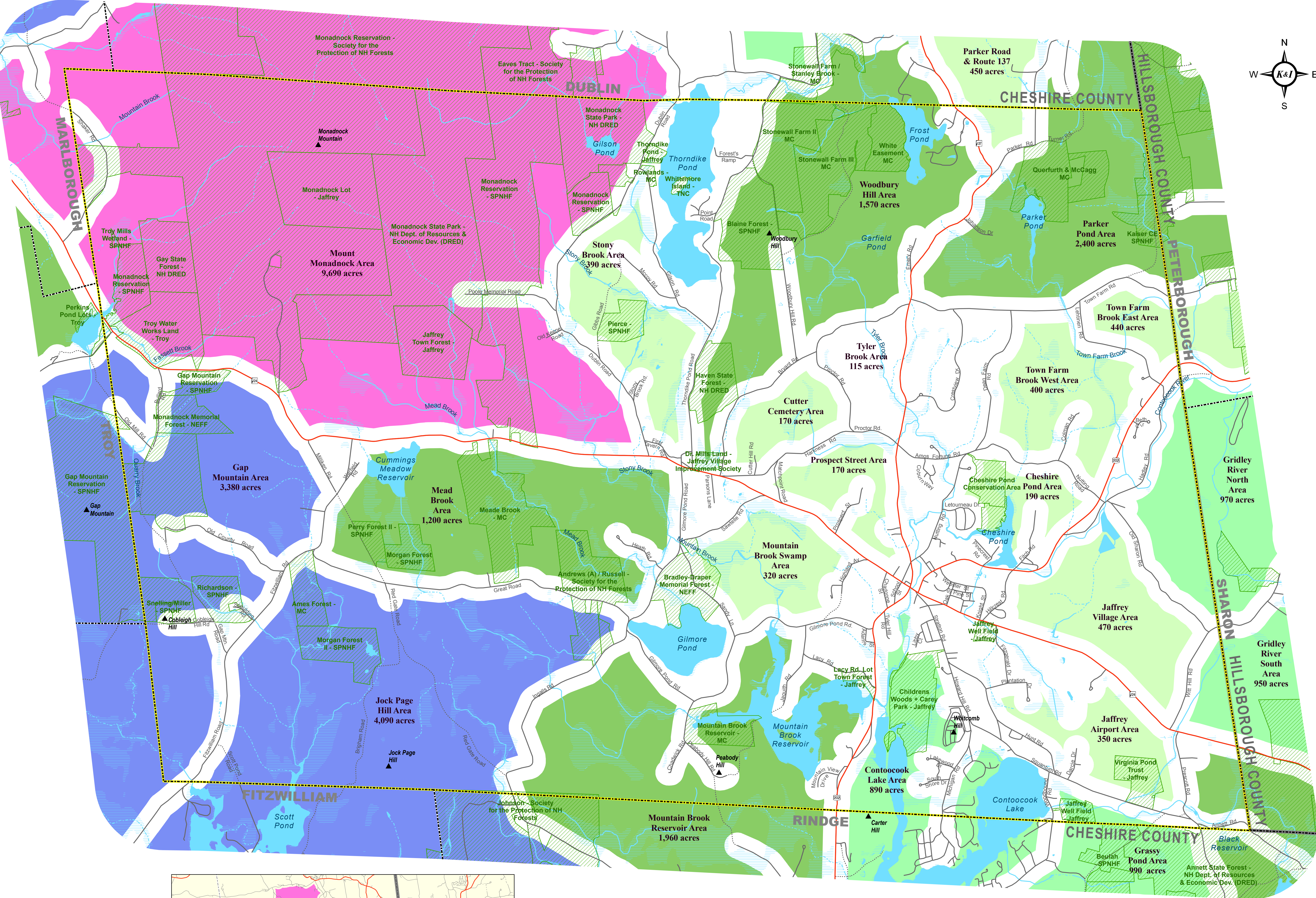
1,001 - 2,500

2,501 - 5,000

5,001 - 10,000

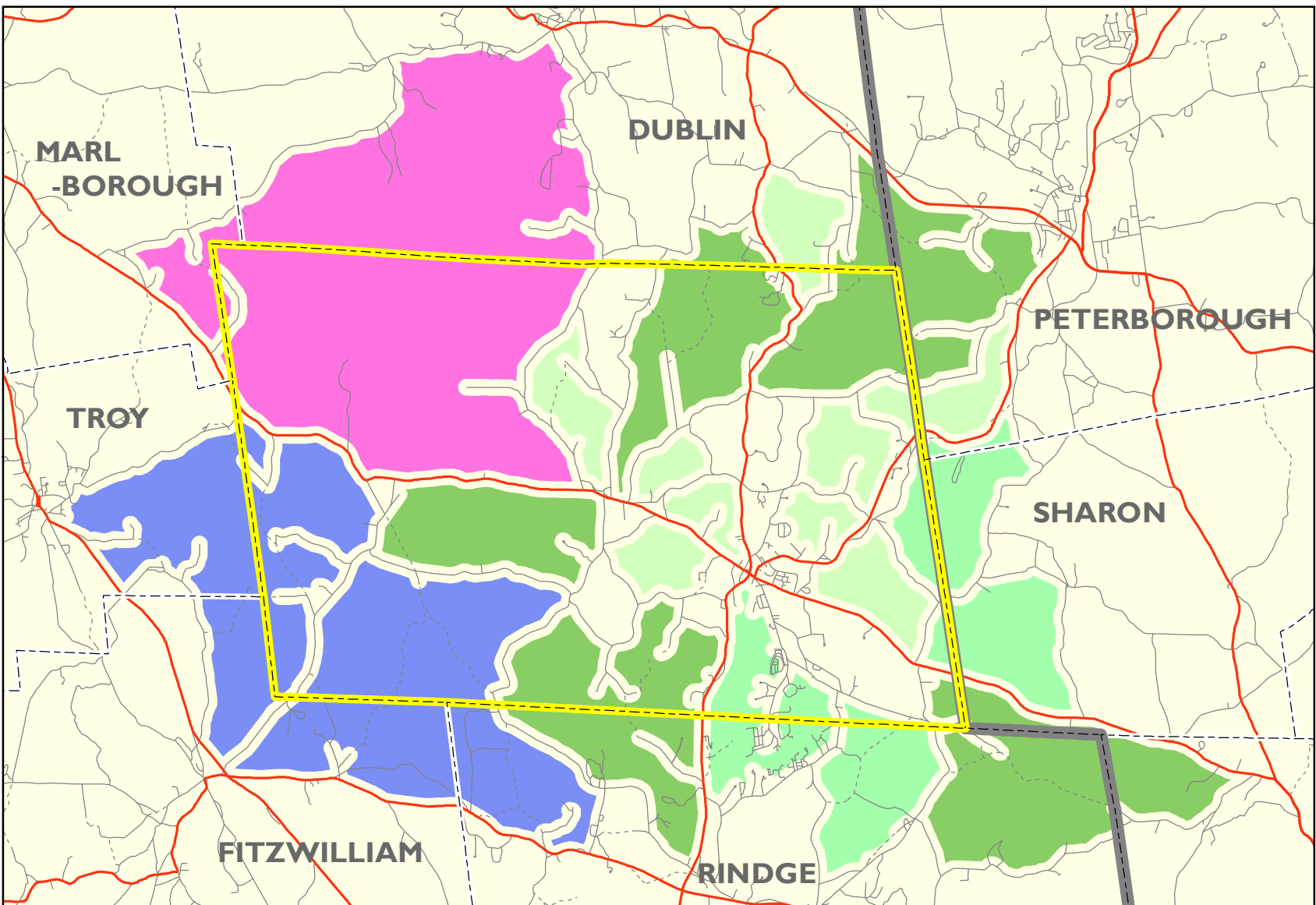
**DATA SOURCES:**  
**NH GRANIT:** All datasets displayed on this map are provided by NH GRANIT unless otherwise noted. Digital data in NH GRANIT represent the efforts of the contributing agencies to record information from the cited source materials. Complex Systems Research Center, under contract to the NH Office of Energy and Planning, and in consultation with cooperating agencies, maintains a continuing program to identify and correct errors in these data. OEP, CSRC, and the cooperating agencies make no claim as to the validity or reliability or to any implied uses of these data.

**DISCLAIMER**  
Every reasonable effort has been made to maintain a high level of quality in developing this product. However, the Town of Jaffrey, Christopher Kane, and Peter Ingraham ("The Producers") make no warranties, expressed or implied, concerning the accuracy, completeness, reliability, or suitability of the data displayed on this map. The Producers do not assume any liability associated with the use or misuse of this information. The information depicted on this map is for planning purposes only. It is not adequate for legal boundary definition, regulatory interpretation, or property conveyance purposes.



**NATURAL RESOURCE INVENTORY**  
This map is part of a series produced as part of a natural resource inventory for the Jaffrey, NH Conservation Commission. The inventory gives a comprehensive illustration of Jaffrey's natural, cultural, and historic resources to inform land and resource use decisions. The various resources are described in detail in the accompanying document *A Natural and Cultural Resource Inventory and Land Conservation Plan*, produced by Kane and Ingraham and available from the Jaffrey Conservation Commission.

This map was created and published by Kane and Ingraham, April, 2009.



**UNFRAGMENTED LANDS**  
This unfragmented lands analysis illustrates the degree of natural resource fragmentation in Jaffrey. Undeveloped land becomes fragmented over time as new roads and intensive human land use convert and divide the natural landscape. To create this dataset, regularly traveled roadways were identified (those roads which are paved or in regular use as well as the roads and runways associated with the Jaffrey Airport; unmaintained and class VI roads are assumed to have minimal fragmenting effects). Next, a 500-foot buffer was applied to identified roads to account for frontage development and traffic impacts (noise, pollution, etc.). These buffers were then erased from the surrounding land mass.

The result of this analysis is a set of unbroken blocks of land, largely in natural land cover including forests, open lands, wetlands, or open water. These blocks provide important core habitat for plants, animals, and natural communities and areas for recreation and timber production.

Blocks here are displayed by their total acreage (irrespective of town boundaries); broadly speaking, larger blocks provide more habitat and are more resilient to disturbance and are thus more likely to be viable habitat over the long term.

The map to the left shows the entire extent of unfragmented blocks in Jaffrey.

1:18,000

(1 inch equals approximately 0.3 miles)

0 1,000 2,000 4,000 6,000 8,000 10,000 Feet

0 0.5 1 2 Miles

UNFRAGMENTED LANDS - Jaffrey, New Hampshire

April 13th, 2009