

WATER RESOURCES

Jaffrey, New Hampshire

Conservation and Public Lands



Surface Water



Streams

Perennial

Intermittent

Wetlands (National Wetlands Inventory)



Jaffrey Boundaries



Municipal Boundaries



County Boundaries



Summits



Roads

Highways

Local Roads

Unmaintained Roads

Watershed Boundaries



Wellhead Protection Areas



Public Water Supplies



Known Ground Water Hazards and Point Pollution Sources



Known Ground Water Hazards (areas)



FEMA 100 year floodplain



Potentially Favorable Gravel Well Areas



Aquifer

Maximum Transmissivity

1,000 sq. ft. / day

2,000

4,000

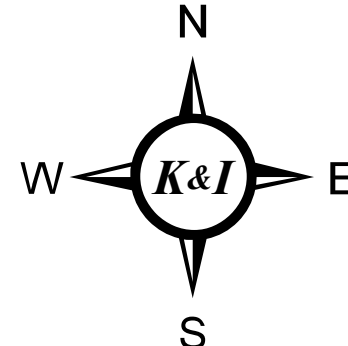
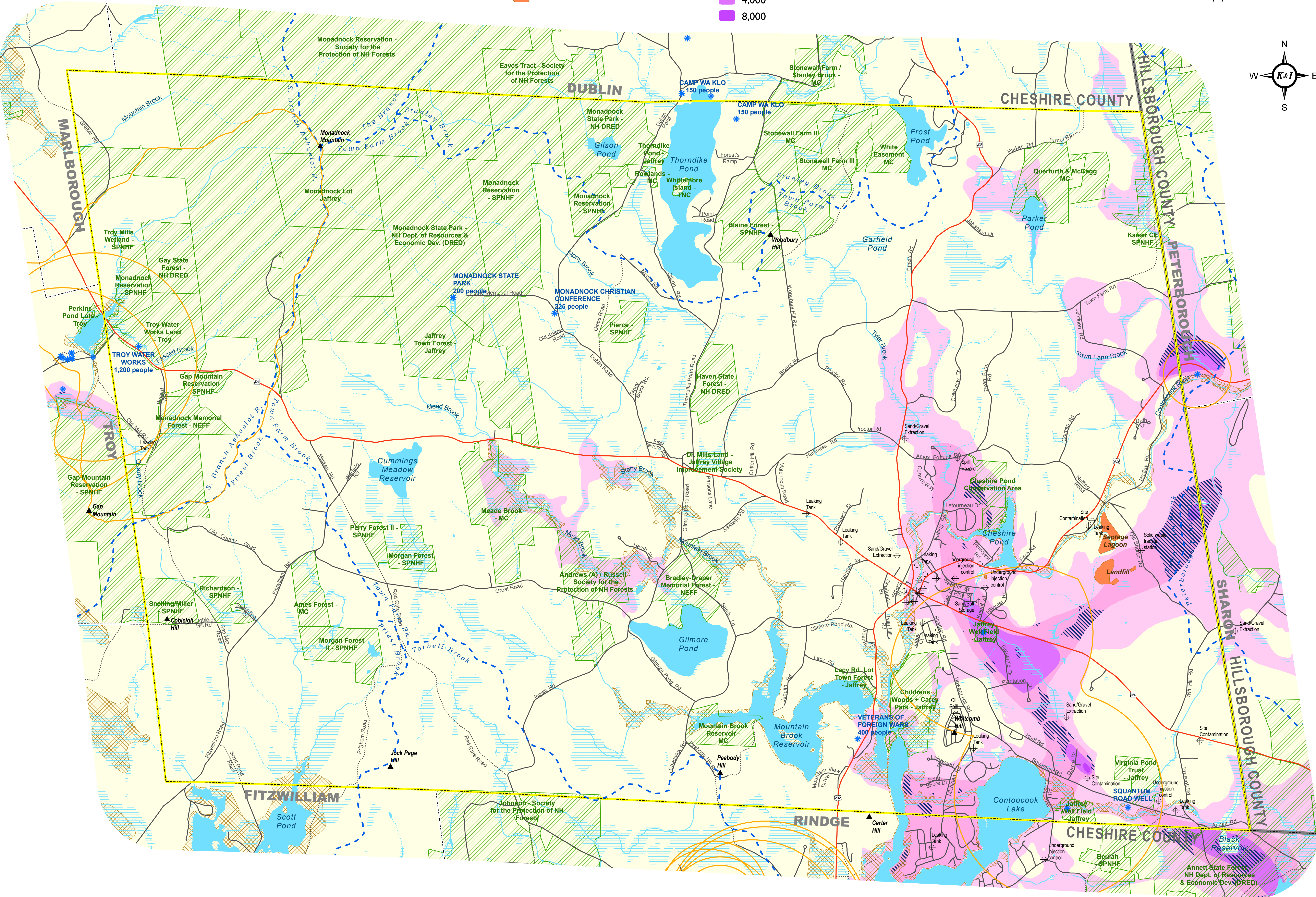
8,000

DATA SOURCES:

NH GRANIT: All datasets displayed on this map are provided by NH GRANIT unless otherwise noted. Digital data in NH GRANIT represent the efforts of the contributing agencies to record information from the cited source materials. Complex Systems Research Center, under contract to the NH Office of Energy and Planning, and in consultation with cooperating agencies, maintains a continuing program to identify and correct errors in these data. OEP, CSRC, and the cooperating agencies make no claim as to the validity or reliability or to any implied uses of these data.

DISCLAIMER

Every reasonable effort has been made to maintain a high level of quality in developing this product. However, the Town of Jaffrey, Christopher Kane, and Peter Ingraham ("The Producers") make no warranties, expressed or implied, concerning the accuracy, completeness, reliability, or suitability of the data displayed on this map. The Producers do not assume any liability associated with the use or misuse of this information. The information depicted on this map is for planning purposes only. It is not adequate for legal boundary definition, regulatory interpretation, or property conveyance purposes.



1:18,000

(1 inch equals approximately 0.3 miles)

0 1,000 2,000 4,000 6,000 8,000 10,000 Feet

0 0.5 1 2 Miles

NATURAL RESOURCE INVENTORY

This map is part of a series produced as part of a natural resource inventory for the Jaffrey, NH Conservation Commission. The inventory gives a comprehensive illustration of Jaffrey's natural, cultural, and historic resources to inform land and resource use decisions. The various resources are described in detail in the accompanying document *A Natural and Cultural Resource Inventory and Land Conservation Plan*, produced by Kane and Ingraham and available from the Jaffrey Conservation Commission.

This map was created and published by Kane and Ingraham, April, 2009.

WATERSHED BOUNDARIES

The watershed boundaries shown here are based on USGS 12-digit hydrologic units (HUC12) and include portions of The Branch, Nubanusit Brook, Peterborough Tributaries, Stanley Brook, South Branch Ashuelot River, Town Farm Brook, Priest Brook, and Torbell Brook watersheds.

KNOWN GROUND WATER HAZARDS AND POINT POLLUTION SOURCES

These data include existing and potential threats to groundwater quality as well as potential point pollution sources as recorded in the files of the NHDES Oil Remediation and Compliance Bureau. Environmental risk varies widely between mapped features and may not affect conservation planning directly, but can provide guidance as to where there may be current or future concern for Jaffrey's natural resources. The datasets used in this layer were provided by NH Department of Environmental Services.

PUBLIC WATER SUPPLIES

These data include wells, surface water, or treatment entities that are part of a public water supply system in New Hampshire permitted through the Water Supply Engineering Bureau of NHDES. Only active systems are displayed here and include three types: Community, non-transient, non-community (e.g. schools, hospitals, businesses etc.), and transient, non-community (e.g. hotels, restaurants, campground, etc.). Public water supplies are displayed by population served (larger symbols equate to more people) and are labeled by intake volume. This dataset was provided by NH DES.

WELLHEAD PROTECTION AREAS

Wellhead Protection Areas (WHPAs) for public water supplies are meant to protect areas with influence on drinking water quality. WHPAs are delineated based on NH DES source water protection priorities; radii for wells are based on intake volume; surface water intakes are based on partial watershed delineations. This dataset was provided by NH Department of Environmental Services.

AQUIFERS

These data represent modeled aquifers based on USGS ground water sampling. Aquifers are shown by transmissivity or the rate at which water is replaced when withdrawn. Potentially favorable gravel well areas are delineated based on high transmissivity areas (>1,000 square feet / day) largely unaffected by potential pollution sources such as ground water hazards, roads, and developed areas. This dataset was provided by NH Department of Environmental Services.

100-YEAR FLOODPLAINS

These data are based on the New Hampshire Digital Flood Insurance Rate Maps (DFIRMs). Any floodplain shown on this map has a 1% risk of flooding in any given year.



This project was supported by funds from the sale of the Conservation License Plate (Moose Plate) under the NH State Conservation Committee grant program.



Kane & Ingraham
Conservation
Consultants

6 Donovan Street • Concord, NH 03301
603-848-7572 • www.kicconservation.com

WATER RESOURCES – Jaffrey, New Hampshire
April 13th, 2009