

Jaffrey 16307 US 202, Dog-Leg Improvements

Public Informational Meeting
March 19, 2024



Introductions & Agenda

Tobey Reynolds – NHDOT,
Project Manager

Dan Prehemo – NHDOT,
Roadway Design Lead

Chuck Gregory – VHB,
Project Manager

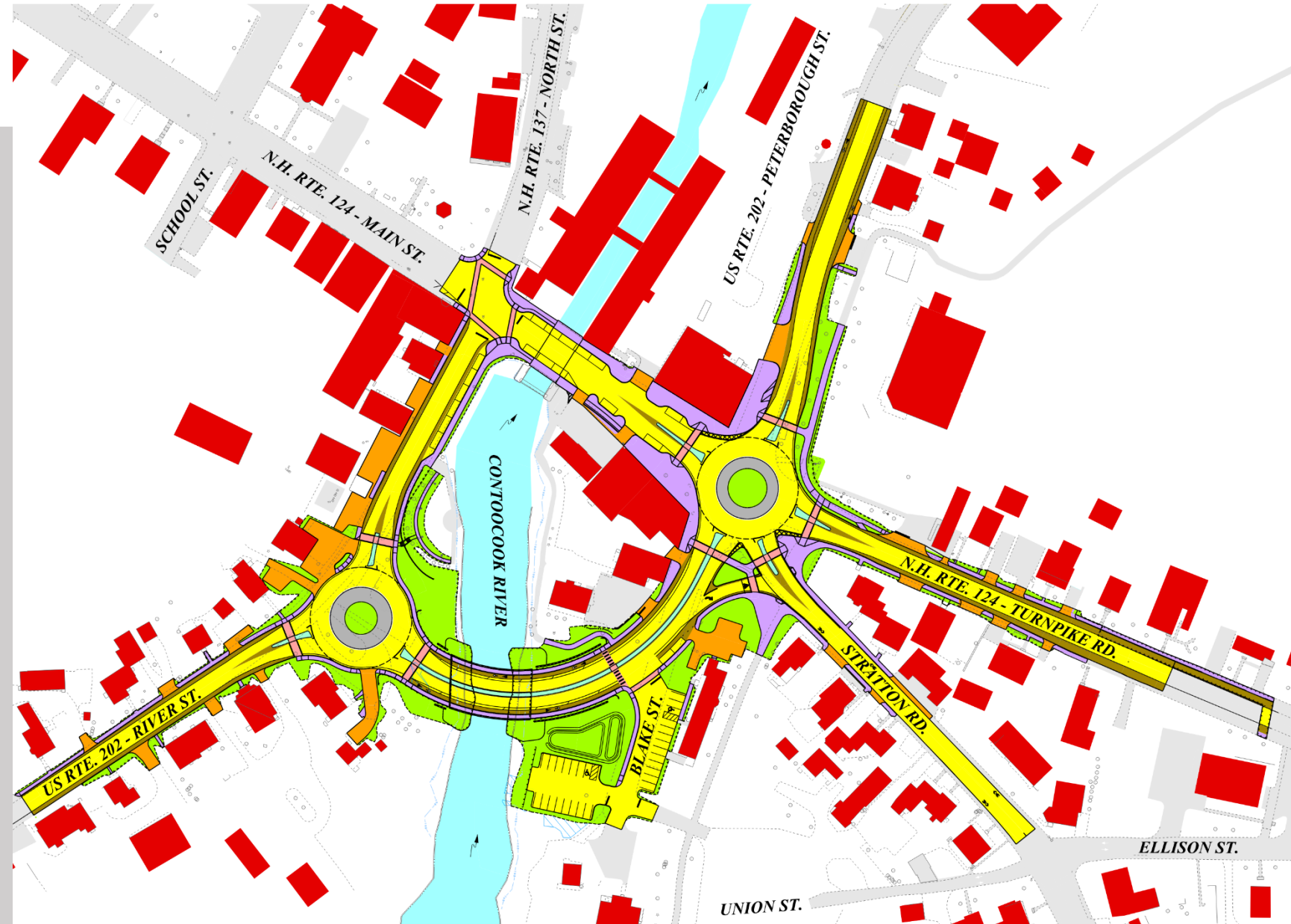
Mark Suennen – VHB,
Traffic Engineer

Karen Fitzgerald – Toole Design

Agenda

- Overview of Major Elements
- What has been happening
- New Bridge
- Town Coordination
- Interpretive Panels
- Construction Phasing
- Schedule
- Communication during Construction

Current Plan



What has been Happening

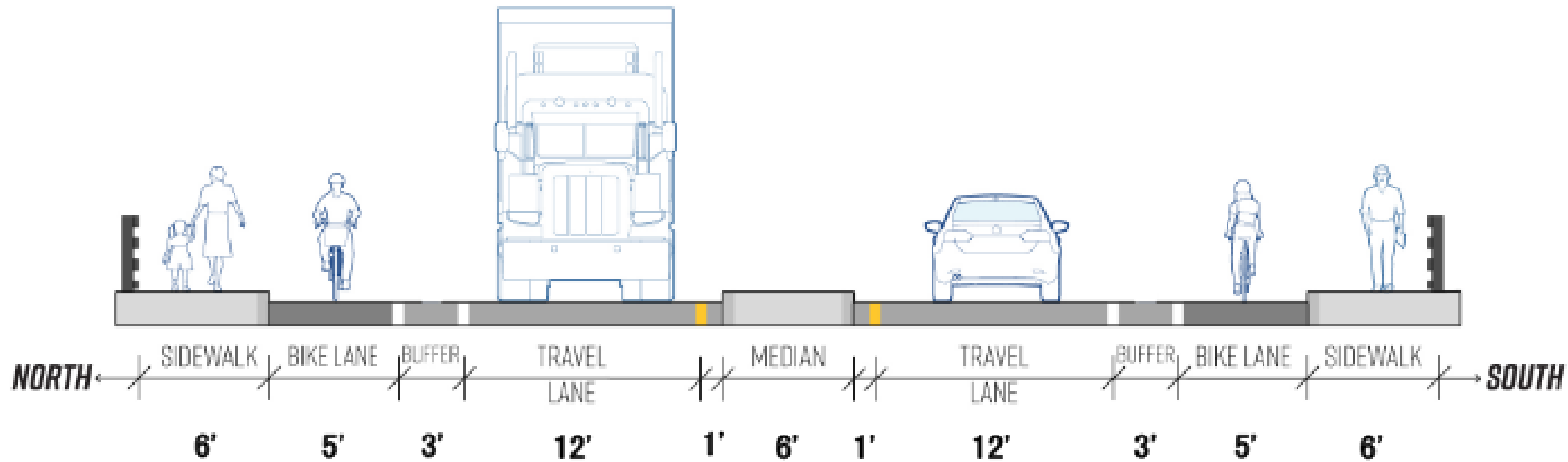
- Right-of-Way Discussions with Property Owners
- Adjusting Plans to Reduce Utility Impacts Where Possible (Water, Sewer, Power, and Telephone)
- Coordinating with Town staff and Town's Consultant (Toole Design) on landscaping improvements
- Developing Roadway and Bridge Plans along with the other Contract Documents
- Environmental Permitting

US 202 Bridge

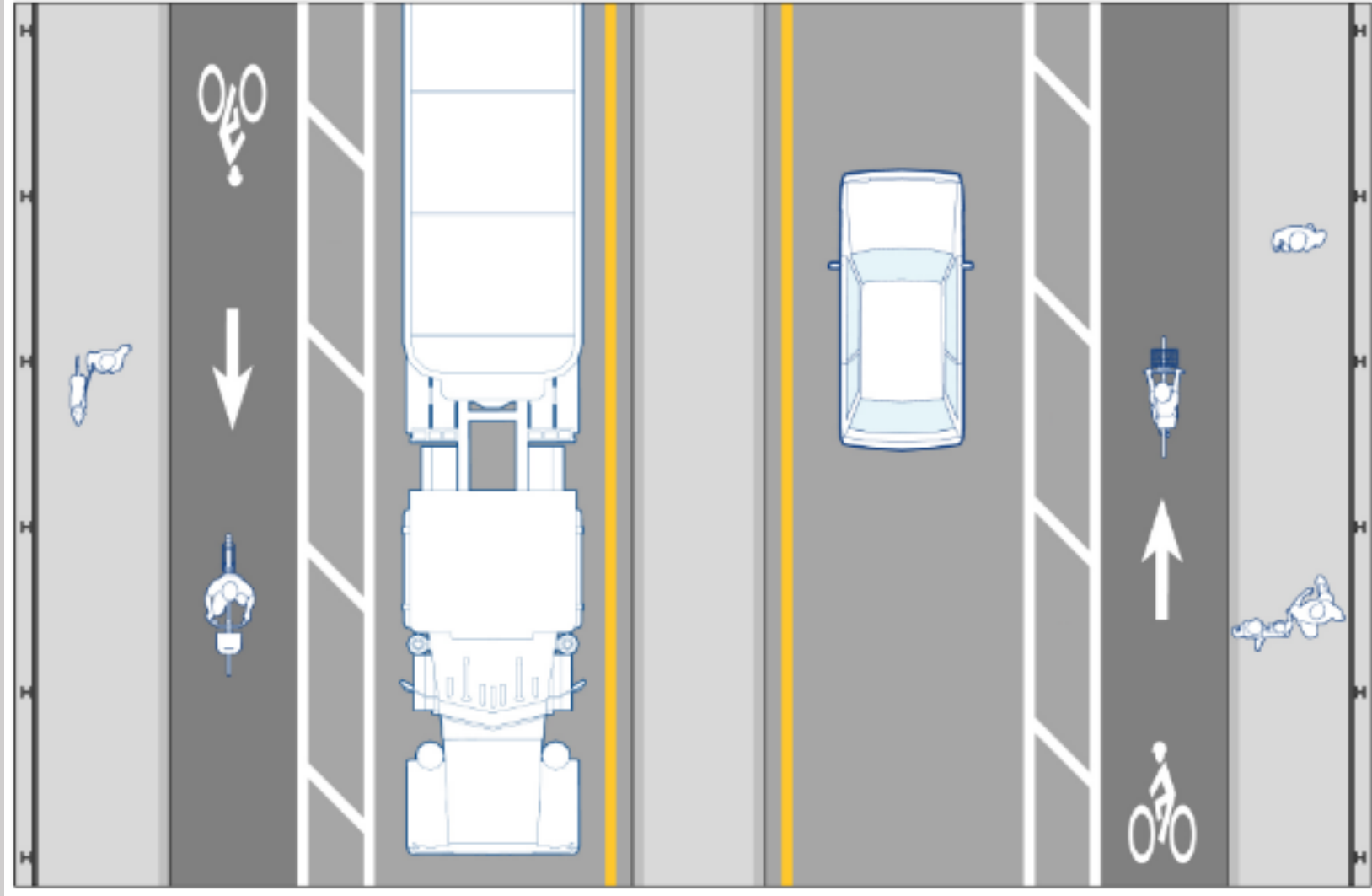
- Black Bridge Rail
- Concrete Pilasters
- Ornamental Lights



Town Input on Cross-Section for US 202 Connector



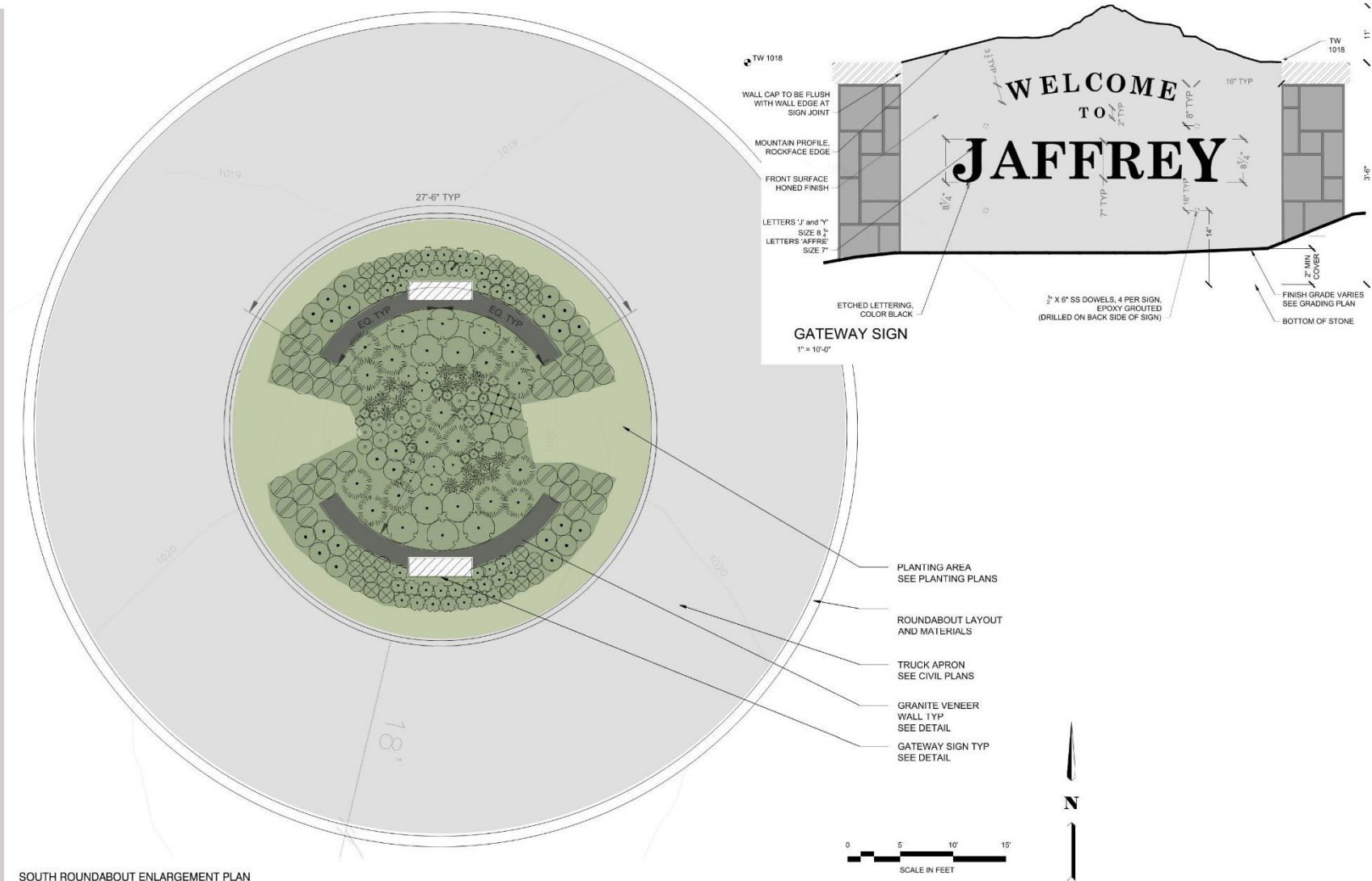
Town Input on Cross-Section for US 202 Connector



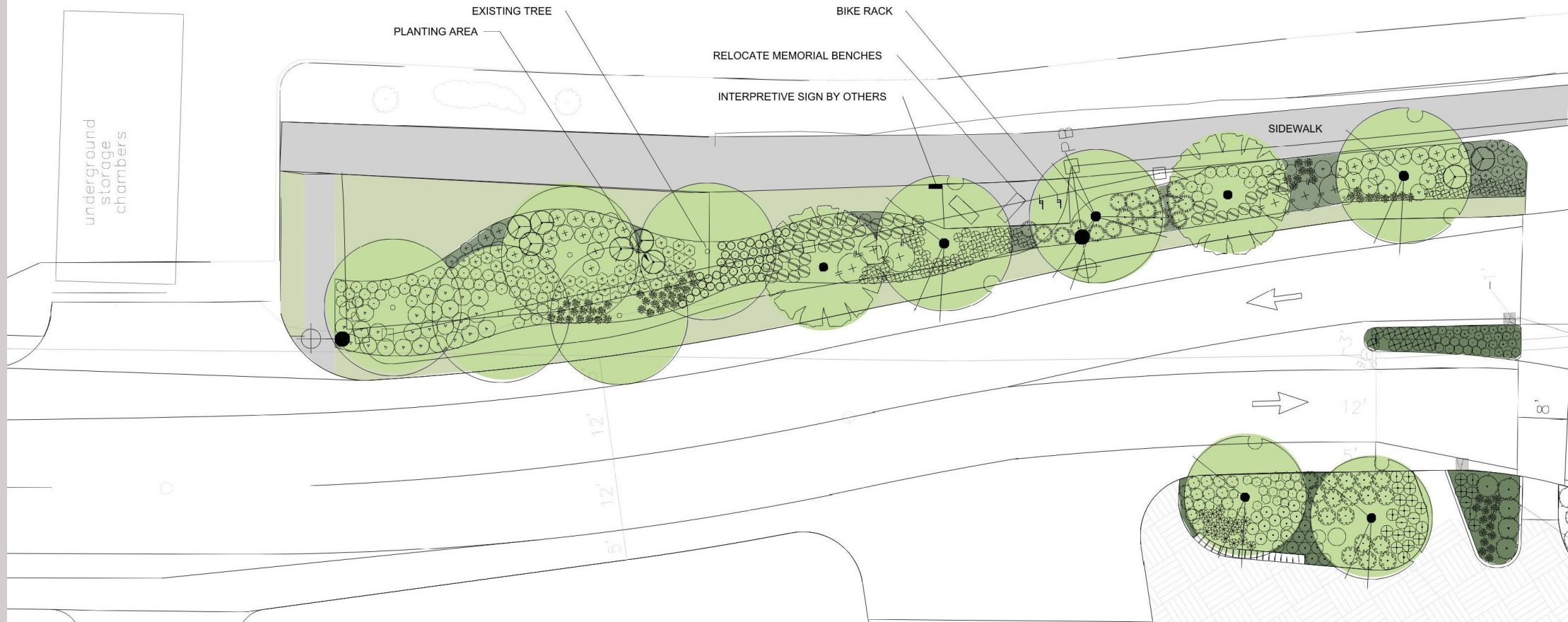
Welcome Plaza



Roundabout



Peterborough Street



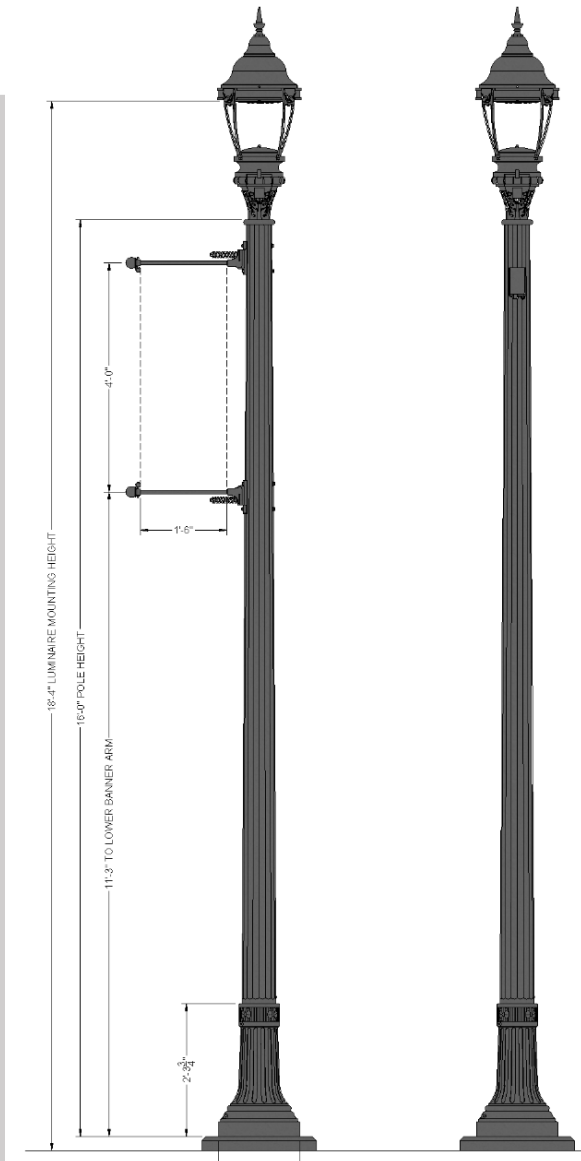
Town Input on Lighting

Ornamental Sidewalk
Lights as Requested
by the Town



Architectural lighting - with high outlets
underground all utilities

Light Assemblies - Types A, B, & C



Interpretive Panels

3 Panels

- Historic and Extant Contoocook River Crossings
- Transportation History
- Residential Architecture/ Neighborhoods

Manchester & Lawrence Railroad



B&M No. 42 at Lawrence, Mass., ca. 1890.
Courtesy Boston & Maine Railroad Historical Society Archives.



Derry, NH depot, ca. 1965. Courtesy Boston & Maine Railroad Historical Society Archives, Whitney Collection.

1902

The railroad in Salem is supplemented by an electric trolley, which runs streetcars from Lawrence, Haverhill, Pelham, Lowell and Nashua to the system's amusement park, Canobie Lake Park.

April 1949

The Sunday afternoon roundtrip passenger train is eliminated, leaving only a single round-trip commuter train in the work week.

July 1953

Regular passenger service ends.

Early 1980s

The nine-mile section between Salem and Derry is abandoned, severing the line into two segments, and the rails are removed for salvage.

1986

The section between Derry and a point in Londonderry south of Manchester International Airport (formerly Grenier Air Force Base) is abandoned.

Late 1990s

The City of Manchester removes track for the extension of the main runway at the airport.

1840

July 31, 1847

The 22.29-mile New Hampshire portion of the Manchester & Lawrence Railroad (M&L) is chartered.

1848

Construction begins and proceeds southward.

November 13, 1849

The M&L Railroad opens for passengers.

January 1, 1850

Freight trains start running.

1880

September 1, 1887

The Boston & Maine Railroad (B&M) assumes control of the M&L.

1920

1920s

The buses of the Boston & Maine Transportation Co. begin taking over some of the lesser patronized train runs.

Late 1930s

Regular passenger service dwindles to a single, self-propelled car, which makes one roundtrip each day.

1932–1936

In 1932 the M&L offers six weekday and two Sunday roundtrips by train. Soon thereafter the Sunday morning train is eliminated and by April 1936, buses have replaced all but one of the weekday trips.

1960

May 2000

Guilford Transportation is granted permission to abandon the remaining northern part of the M&L, and additional track in Salem is also removed without waiting for formal abandonment.

2000

2000s and beyond

The former M&L rail corridor is redeveloped in stages as the southern section of the Granite State Rail Trail, extending from the MA state line in Salem, NH all the way to Lebanon, NH.

History of the Manchester & Lawrence Railroad

Regular passenger service on the Manchester & Lawrence Railroad began in 1849 and operated until 1953, with local freight service active into the 1990s. The New Hampshire portion of the railroad carried trains north from the Massachusetts border through Salem, Windham, Derry, and Londonderry before reaching its terminus in Manchester. Elements of the railroad along the route included stations, depots, freight houses, bridges, culverts, cattle passes, and other structures, many of which are still extant. Today, the rails and ties have been removed along the majority of the Manchester & Lawrence corridor, and portions of the rail bed have been redeveloped as a recreational rail trail.

◀ B&M No. 1361 approaching Windham, NH depot, 1912-1913.
Courtesy Boston & Maine Railroad Historical Society Archives.

Interpretive Panel Example
from Another Recent Project

Jaffrey War Memorial Park



Construction Schedule

- Construction Duration: 3 years plus 2 months
- Maintain Access to Homes and Businesses Throughout
- Maintain Pedestrian Access Throughout
- No Night Work

With that said, the NHDOT will coordinate with Owners when work is being completed in front of their property and times when access may be limited for safety to complete the work.

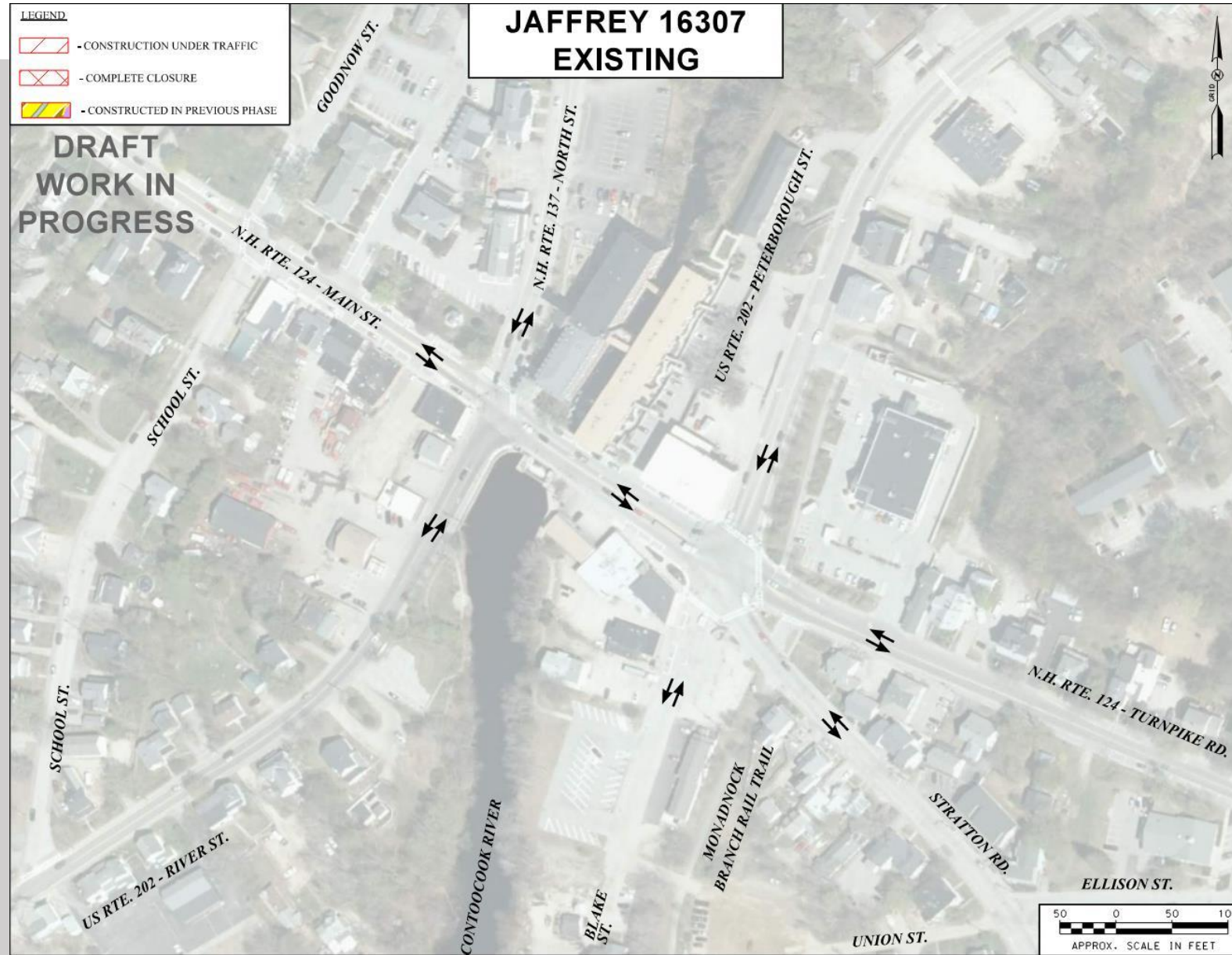
Such as a sidewalk in front of businesses and/or constructing driveway tie-ins at the street in front of homes and businesses.

Construction Schedule

Existing Traffic
Movements

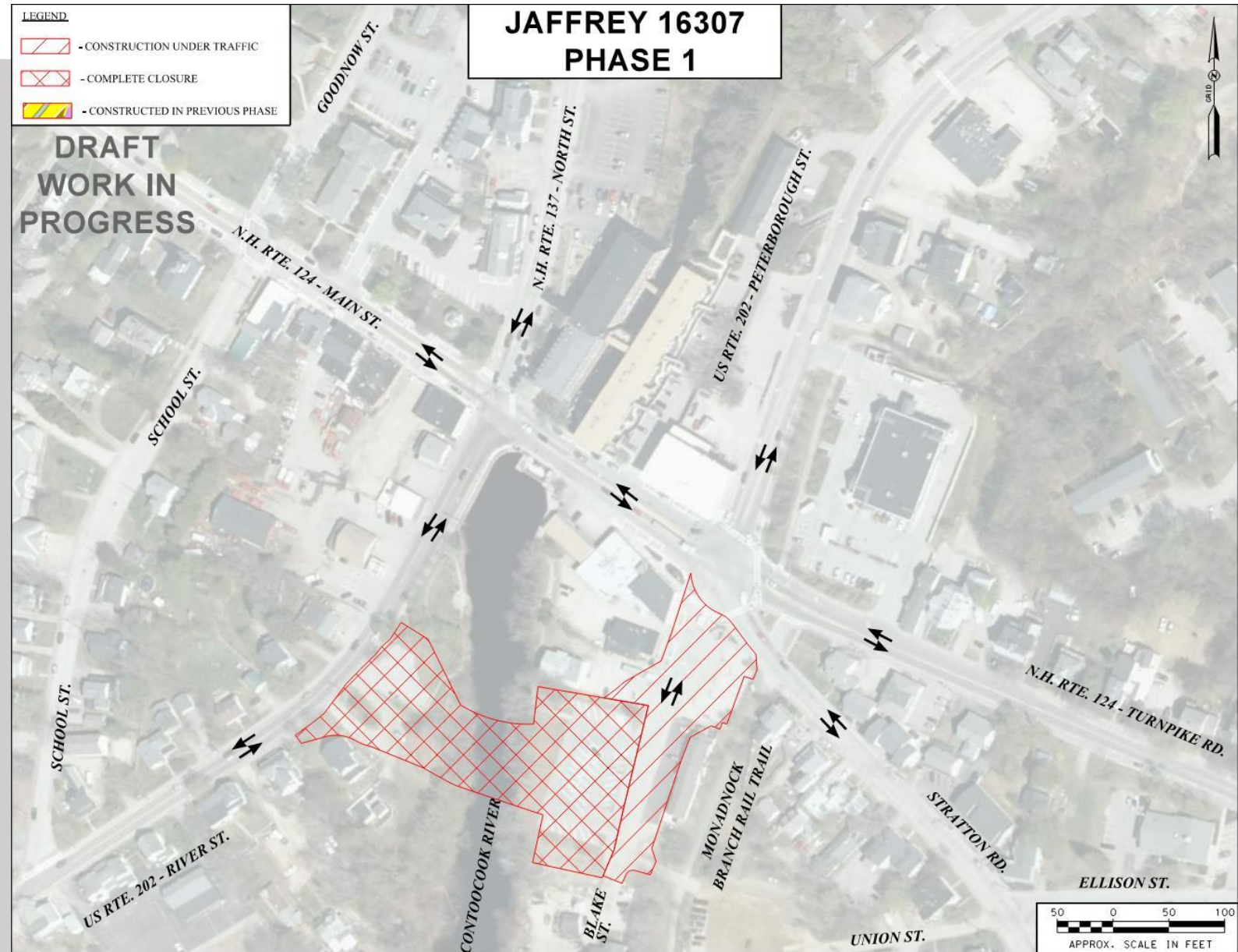
Schedule

3 Years & 2 Months
Construction April
2025 to May 2028



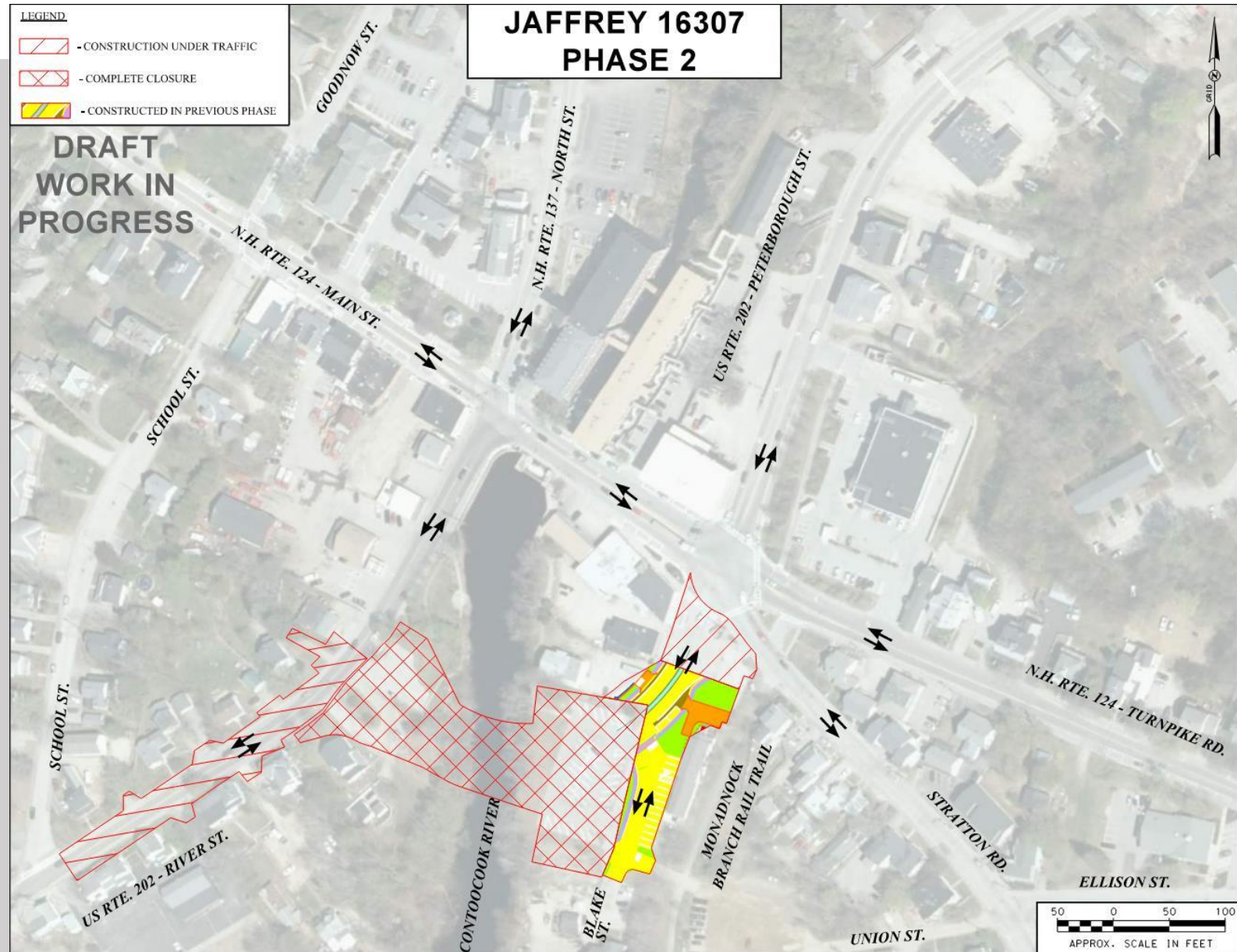
Construction Schedule Phase 1

Nov 2024, Contractor
Approval by G&C
April 2025 thru June
2025,
US 202 Bridge and
Blake Street
Improvements
Closure of the Blake
Street Parking Lot



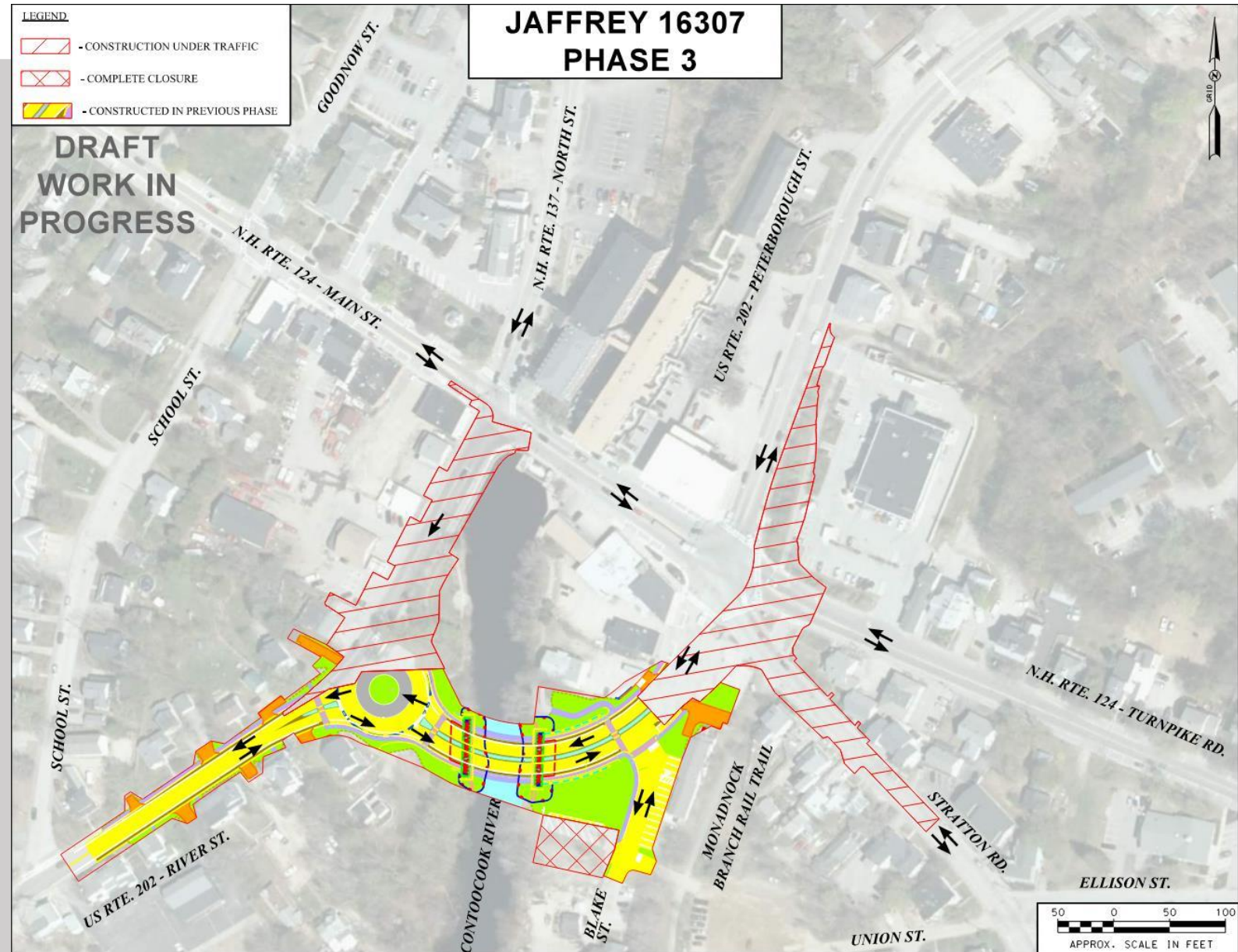
Construction Schedule Phase 2

June 2025 thru
November 2025,
Complete US 202
Bridge, River
Street (US 202)
South
Improvements



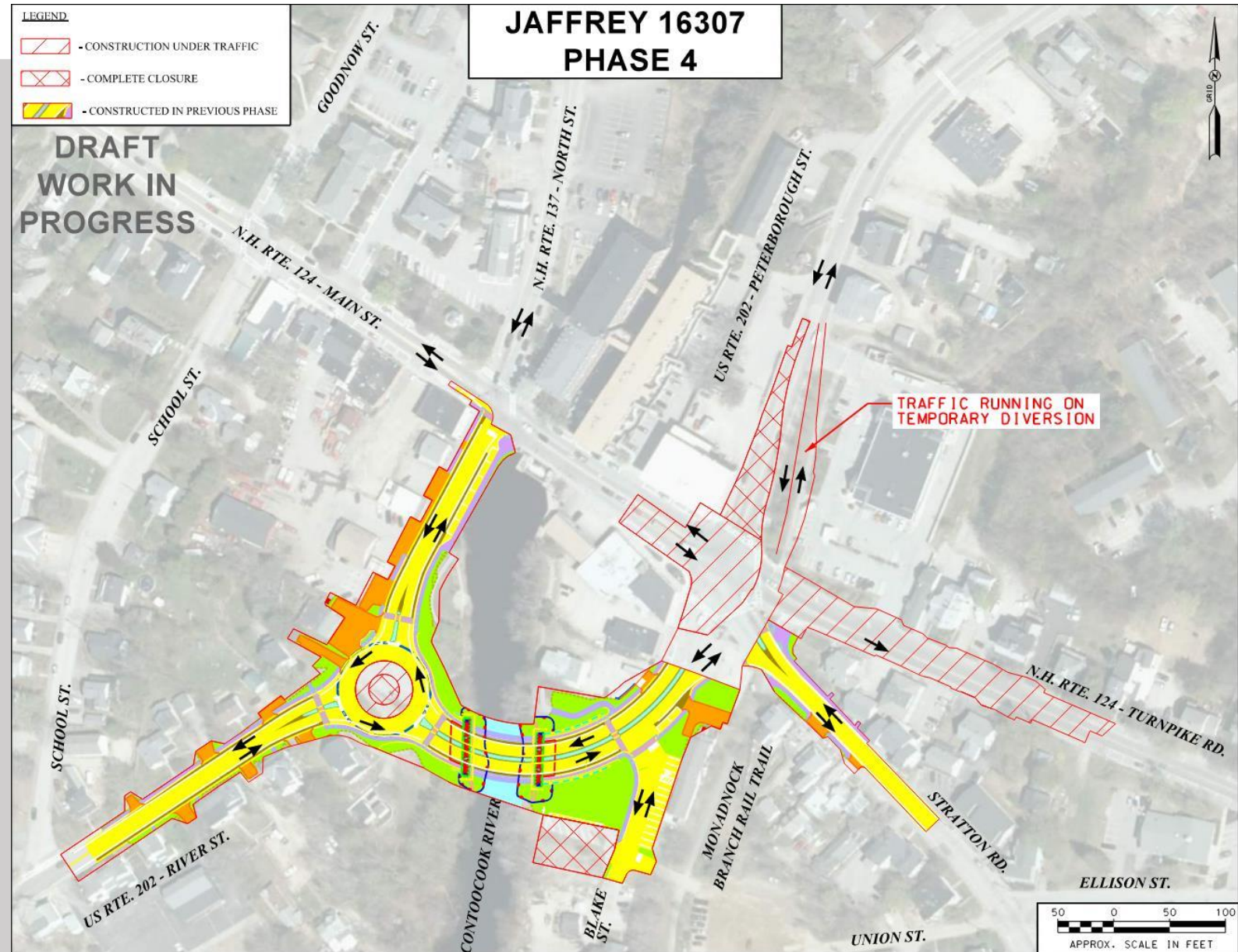
Construction Schedule Phase 3

March 2026 thru
August 2026,
River Street North,
Stratton Road, and
Temporary Widen
for North (5-
Legged)
Roundabout



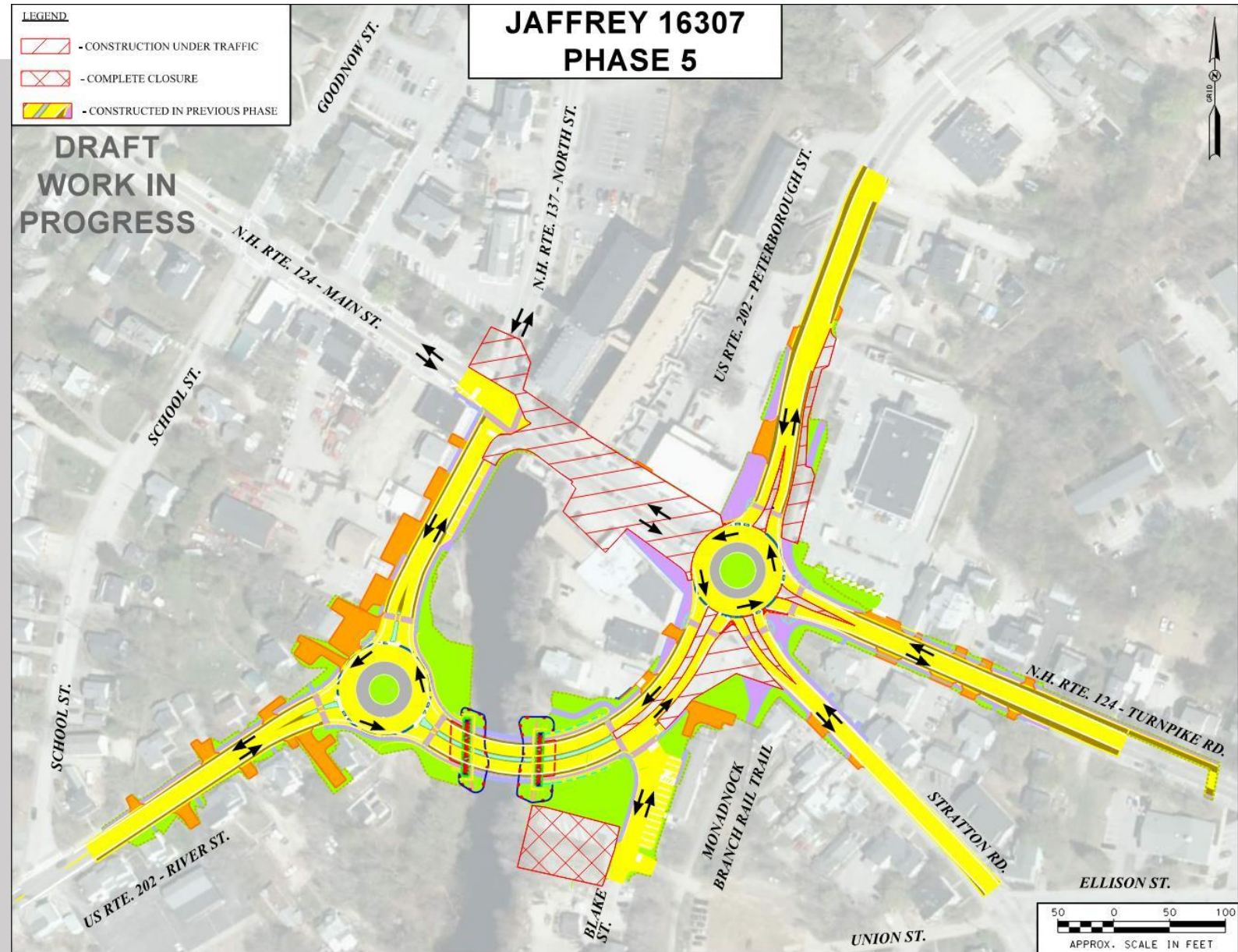
Construction Schedule Phase 4

August 2026 thru
June 2027,
North 5-Legged
Roundabout and
Turnpike Road
(NH 124)
Improvements



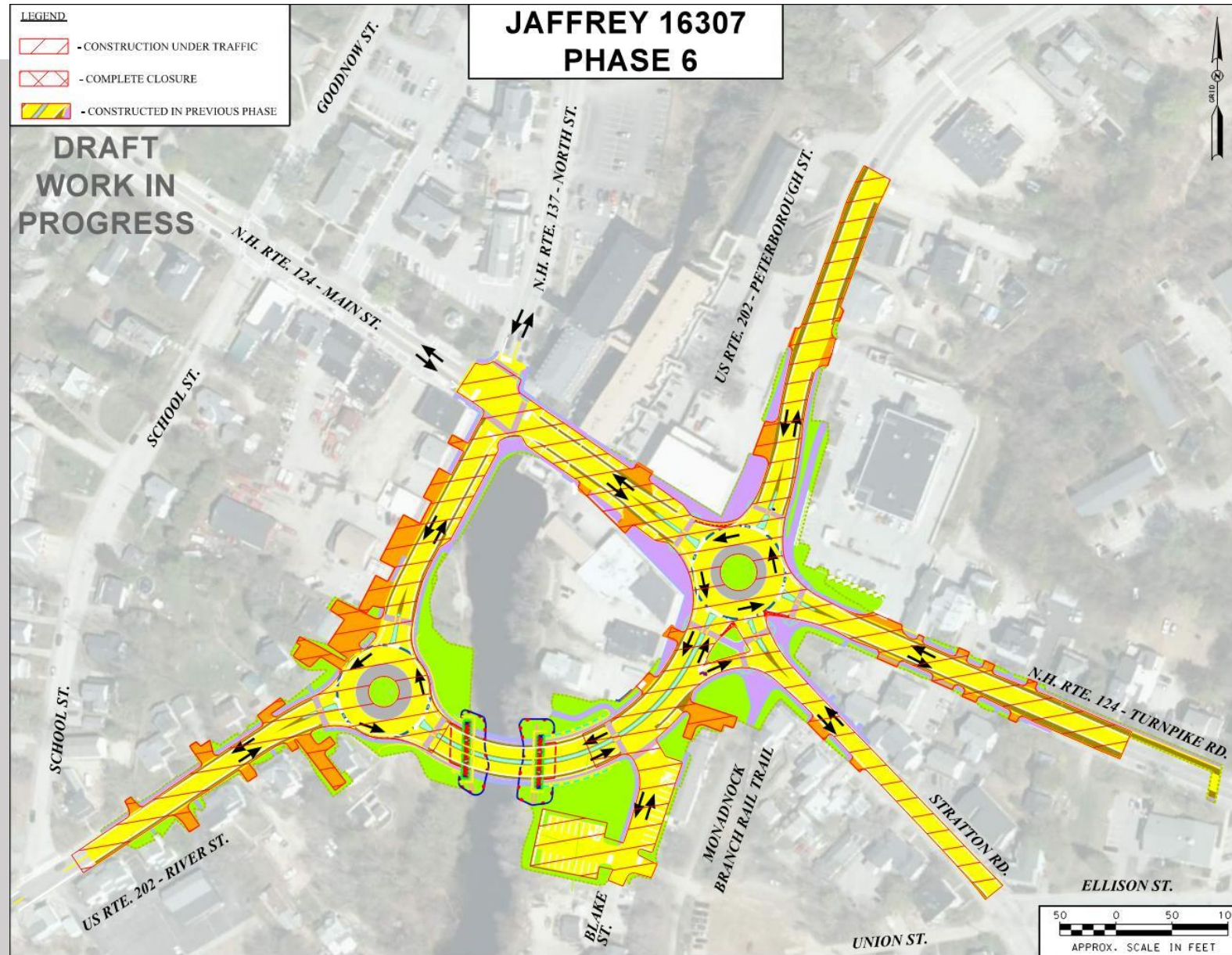
Construction Schedule Phase 5

June 2027 thru
November 2027,
Main Street
Improvements
along with Main
Street Bridge



Construction Schedule Phase 6

March 2028 thru
May 2028,
Pave entire
project and
complete
roundabout
islands



Construction Schedule Summary

Construction Phase	Timeframe Start	End	Major Effort
1	April 2025	June 2025	Construct Blake Street Improvements Begin US 202 Bridge
2	June 2025	Nov 2025	Complete new US 202 Bridge Construct River Street South Improvements
3	March 2026	August 2026	Construct River Street North and Stratton Road Improvements
4	August 2026	June 2027	Construct North 5-Legged Roundabout Construct Turnpike Road Improvements
5	June 2027	Nov 2027	Construct Main Street Improvements
6	March 2028	May 2028	Complete Roundabout Islands, Final Landscaping, Pave and Stripe Project Limits

Next Steps

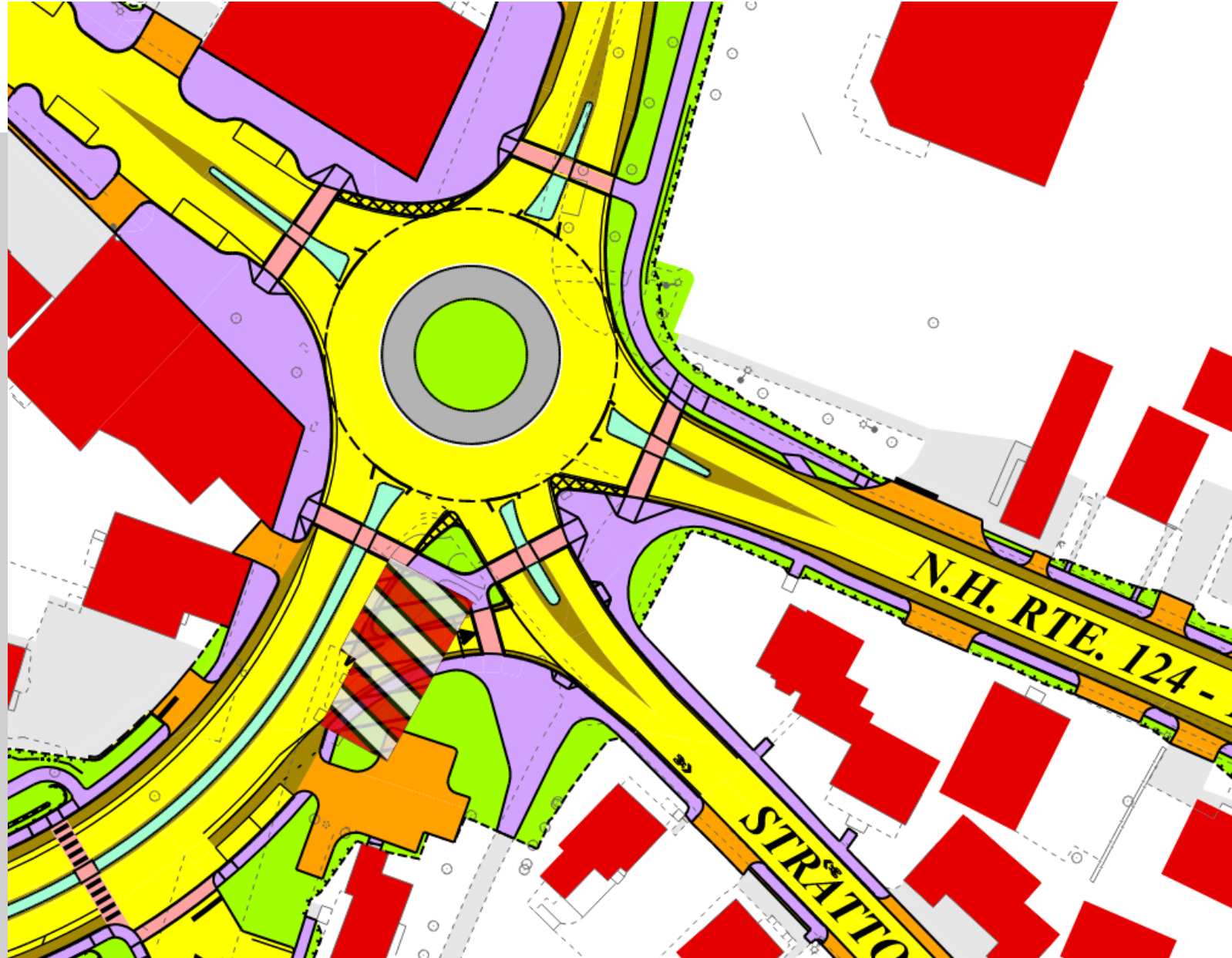
Milestone	16307
Coordinate with Town and Utility Companies to Progress Plans to 80%	April 2024
Bridge Plans Review by Town and NHDHR	May 2024
Contract Plans	June 2024
Environmental Permits Received	June 2024
Advertise for Construction	July 2024
On-site Construction start	April 2025

Communication During Construction

- Pre-Construction Meeting
- NHDOT will have a Contract Administrator (CA) On-site when Site Construction is active
- Bi-Weekly Meetings will be held with CA and Contractor in attendance. Town of Jaffrey staff will be invited and encouraged to attend these meetings.
- Message boards in place through entire contract
- Press Releases for major traffic control events
- DOT Project Manager stays assigned to the project to answer questions

Questions and Comments

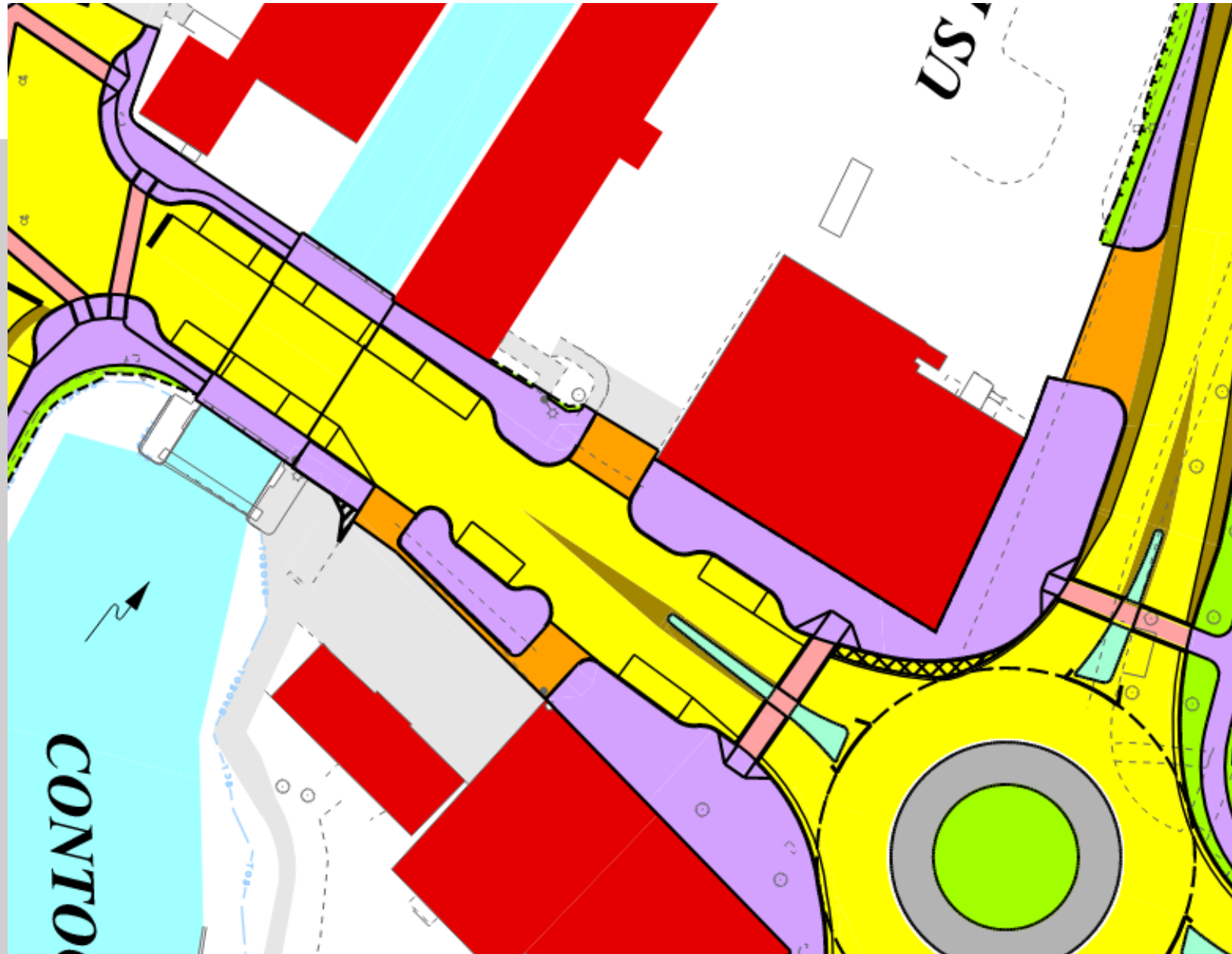
North Roundabout (5-Legged)



South Roundabout (3-Legged)



Main Street



Blake Street Parking Lot

