



Artist Afternoon

TO-GO

Collage Beetle

Use the Tumblebook link below to read a story about a missing bug, then try this fun collage project from Ms. Erin! Use **Encyclopedia Britannica**, found through the library catalog, and look up "beetle" to learn fun facts about beetles and see some cool pictures for inspiration!

Materials

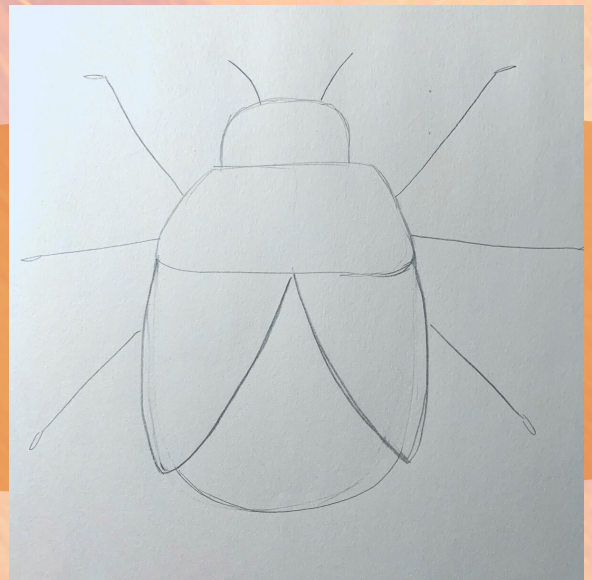
- magazine
- scissors
- glue
- pencil
- paper
- marker



JAFFREY PUBLIC LIBRARY

Step 1.

Draw a beetle on your paper - you can copy this beetle or make up your own!

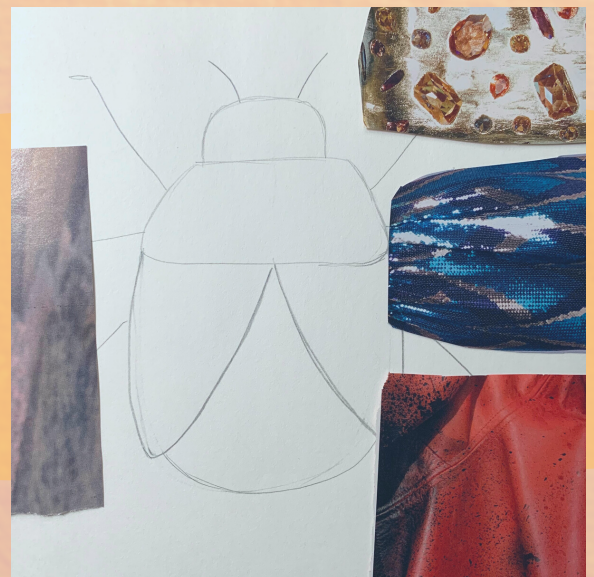


Step 2.

Find colorful patterns in a magazine and cut them out.

Step 3.

Decide which of your magazine pieces you want to be each part of your beetle.



JAFFREY PUBLIC LIBRARY



Step 4.

To cut the piece into shape, lightly fold the magazine paper in half and cut a rounded square from the corner, like the black line in the picture.



Step 5.

Follow Step 4 for the other pieces of the beetle, but do NOT glue down yet.

Step 6

For the wings, trace the body piece onto the magazine piece you decided to use for wings, then draw a wing shape. Cut them out. Then you can glue all the pieces down!



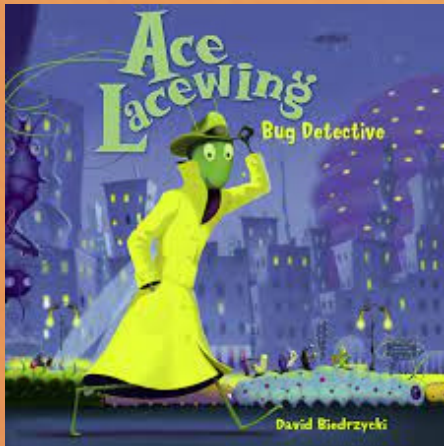
JAFFREY PUBLIC LIBRARY



Step 7.

Draw legs and antennae onto your paper. You can draw some details and patterns as well!

**Check out this Tumblebook to go along with your project!
Log into Tumblebooks via our [catalog](#).**



[Ace Lacewing: Bug Detective](#)
By David Biedrzycki

Share your art with us!

Email us pictures of your finished project to share in our Artist Afternoon album on Facebook at info@jaffreypubliclibrary.org.

www.jaffreypubliclibrary.org | 603.532.7301