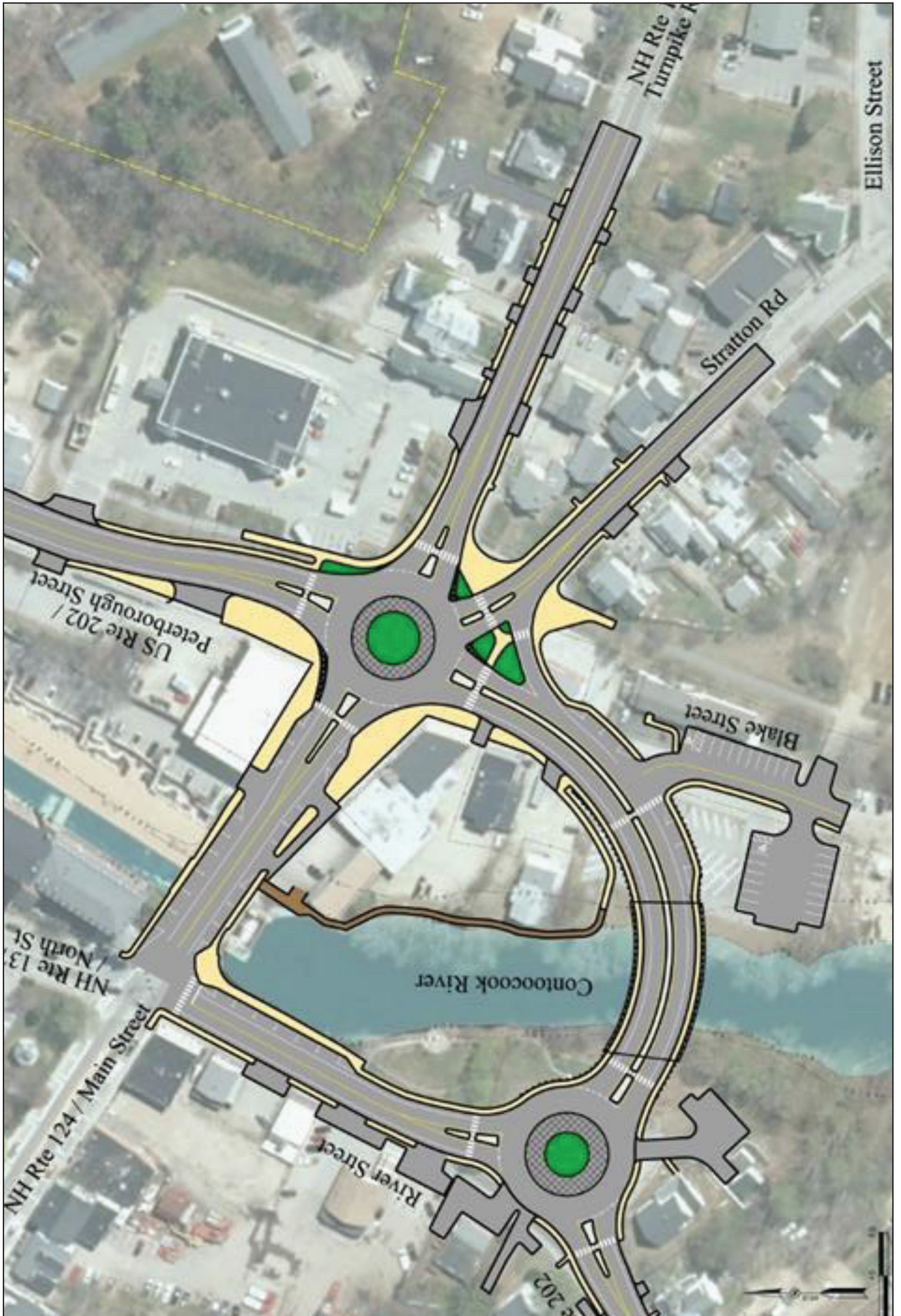


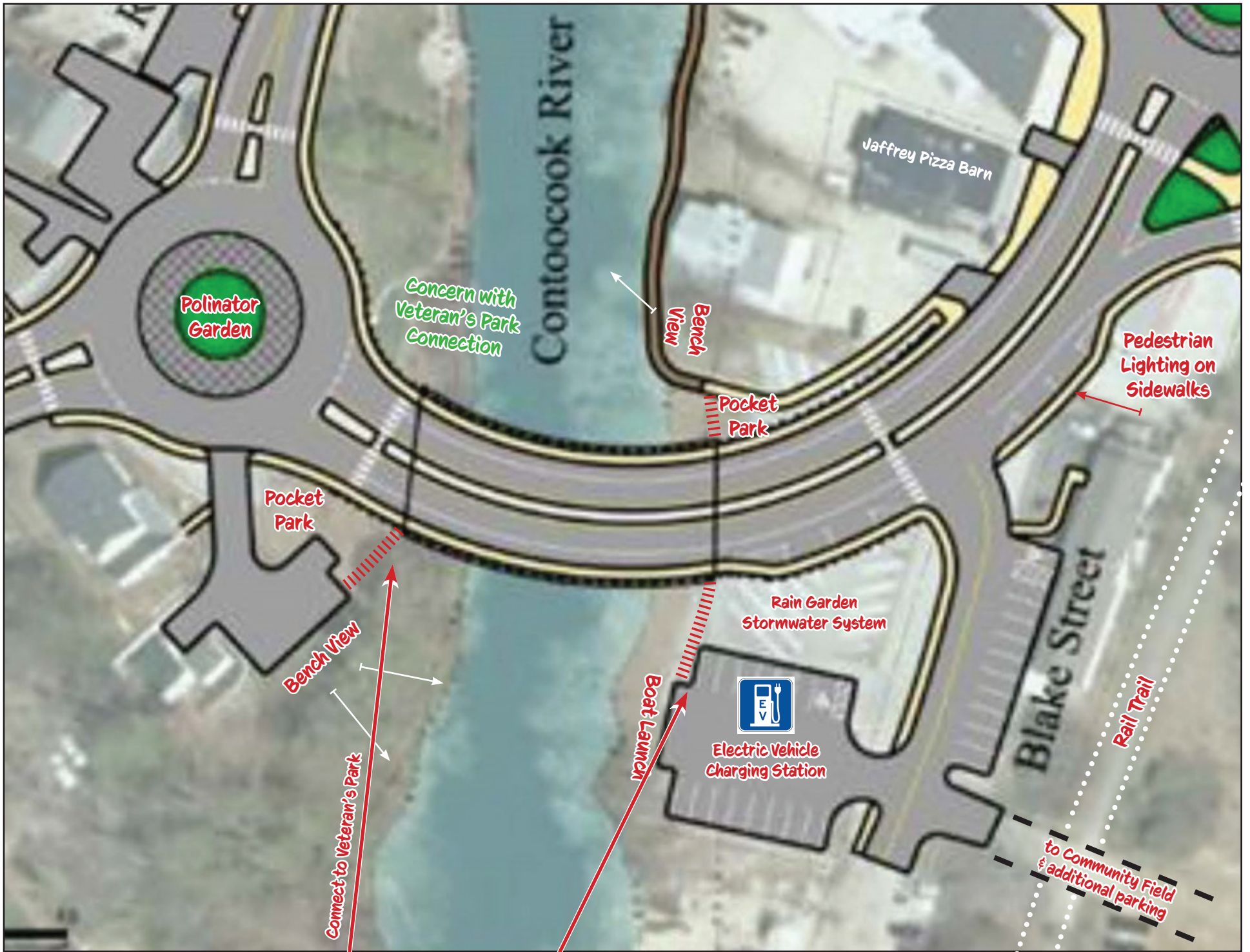
Jaffrey Traffic Project - 16307

~ Downtown Route 202 ~

6/28/2022



Pedestrian Movements - Rail Along Sidewalk

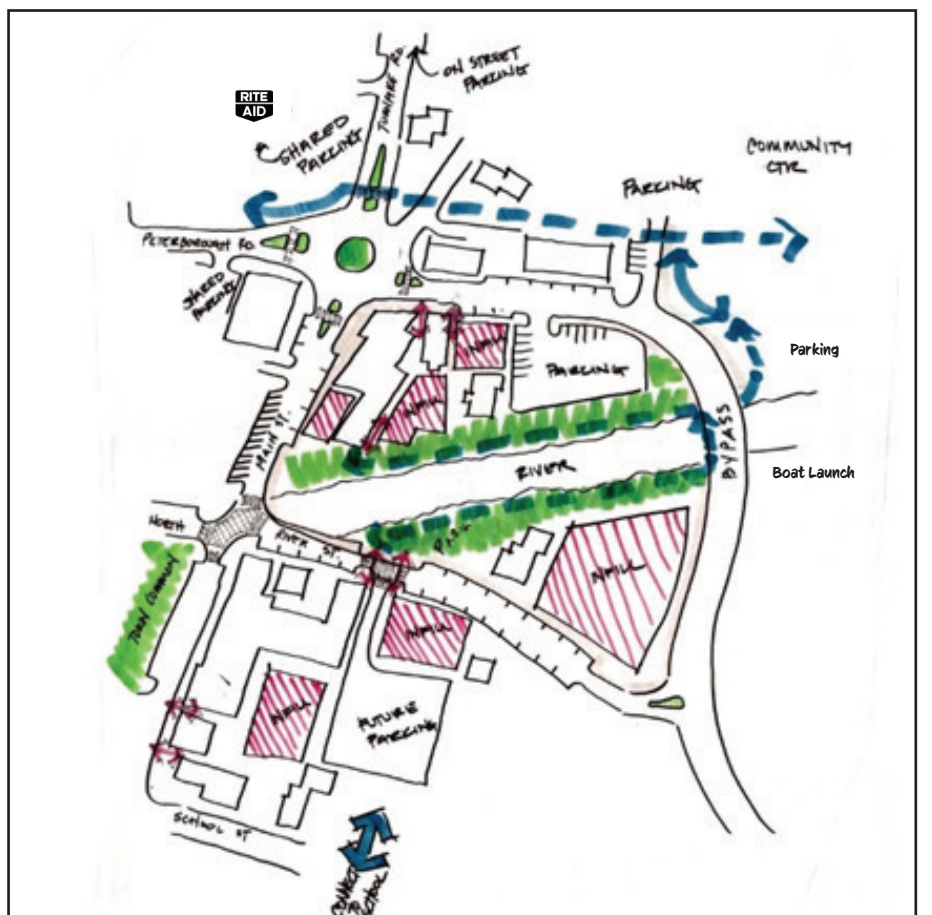


Walkway under bridge

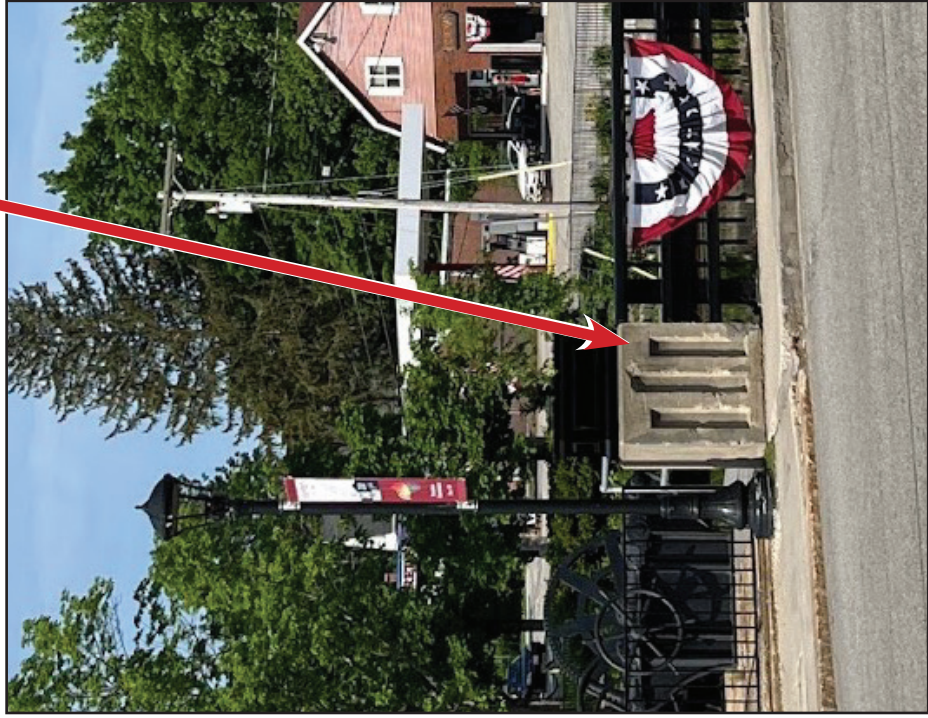
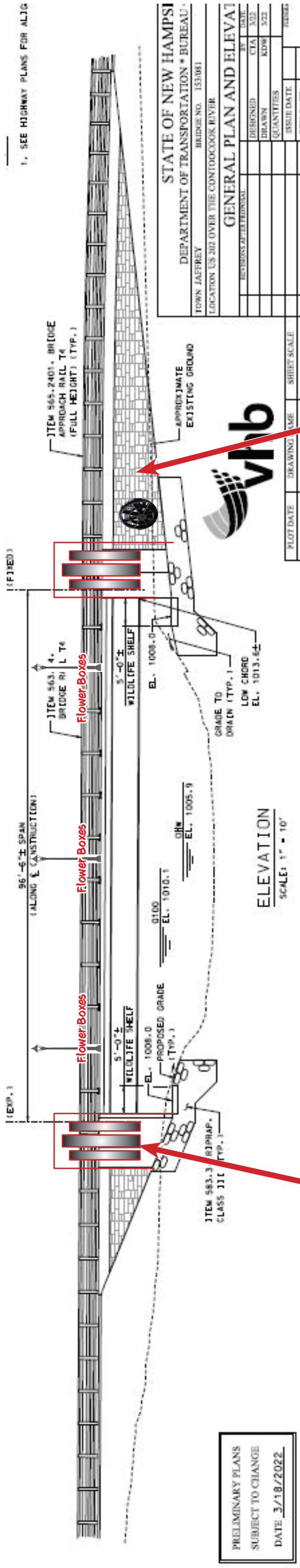


Bridge Rail:

Replicate existing with vertical posts and abutments



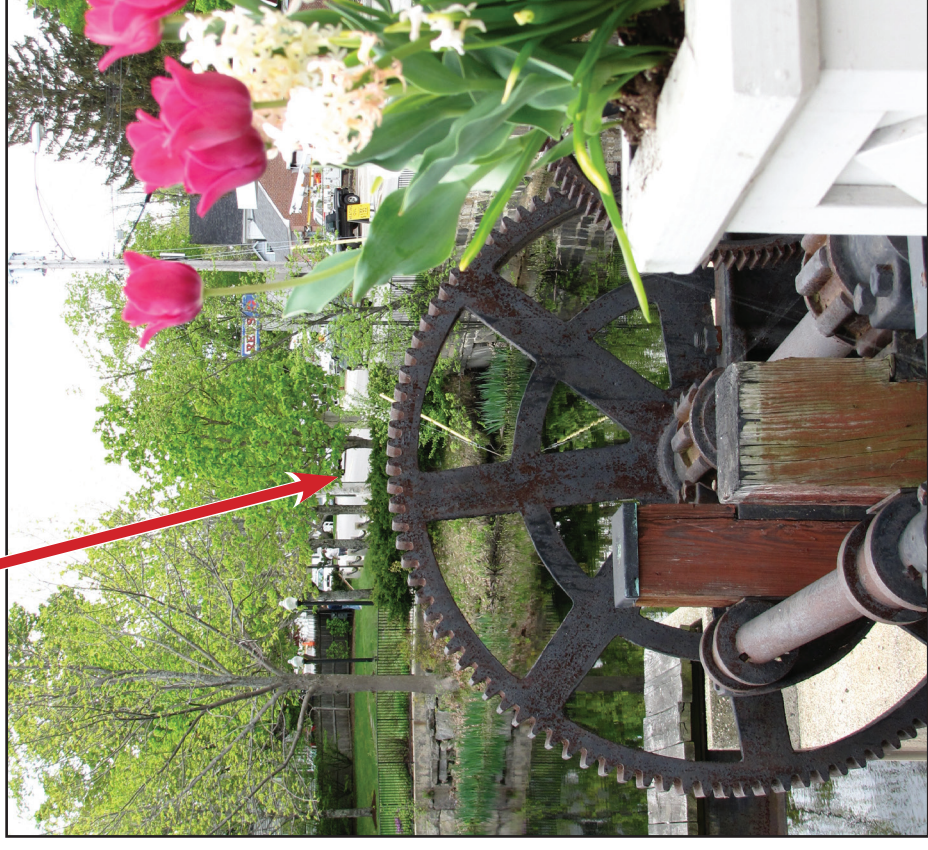
Bridge Enhancements



Mimic existing abutments
4-5' high (taller)

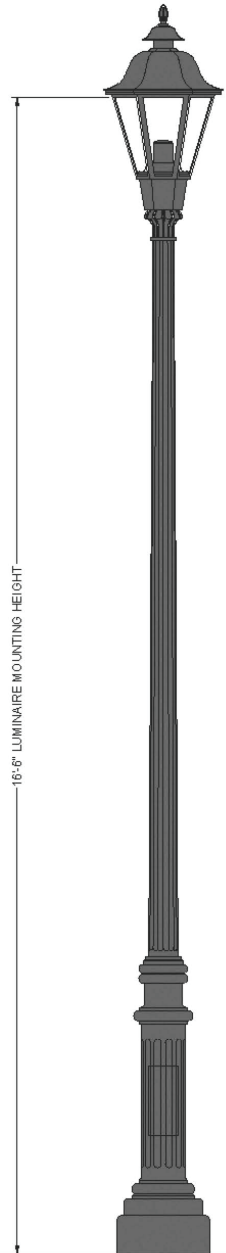


Architectural lighting - with high outlets
underground all utilities

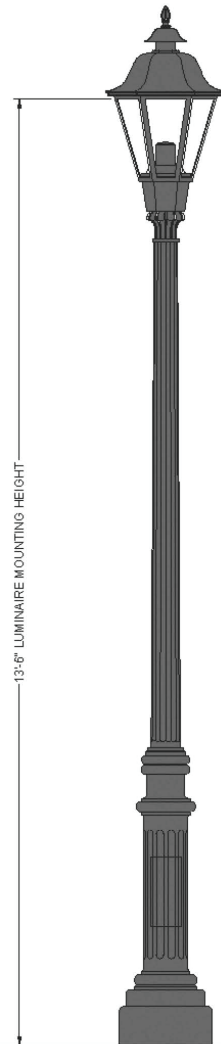
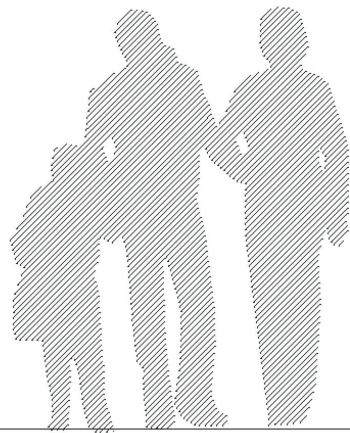


Imprint gear structure in concrete
evoking Jaffrey's manufacturing history
and connection to the river

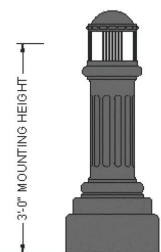
Sample Lighting



16'-6" PEDESTRIAN ROADWAY LIGHT ASSEMBLY - SINGLE



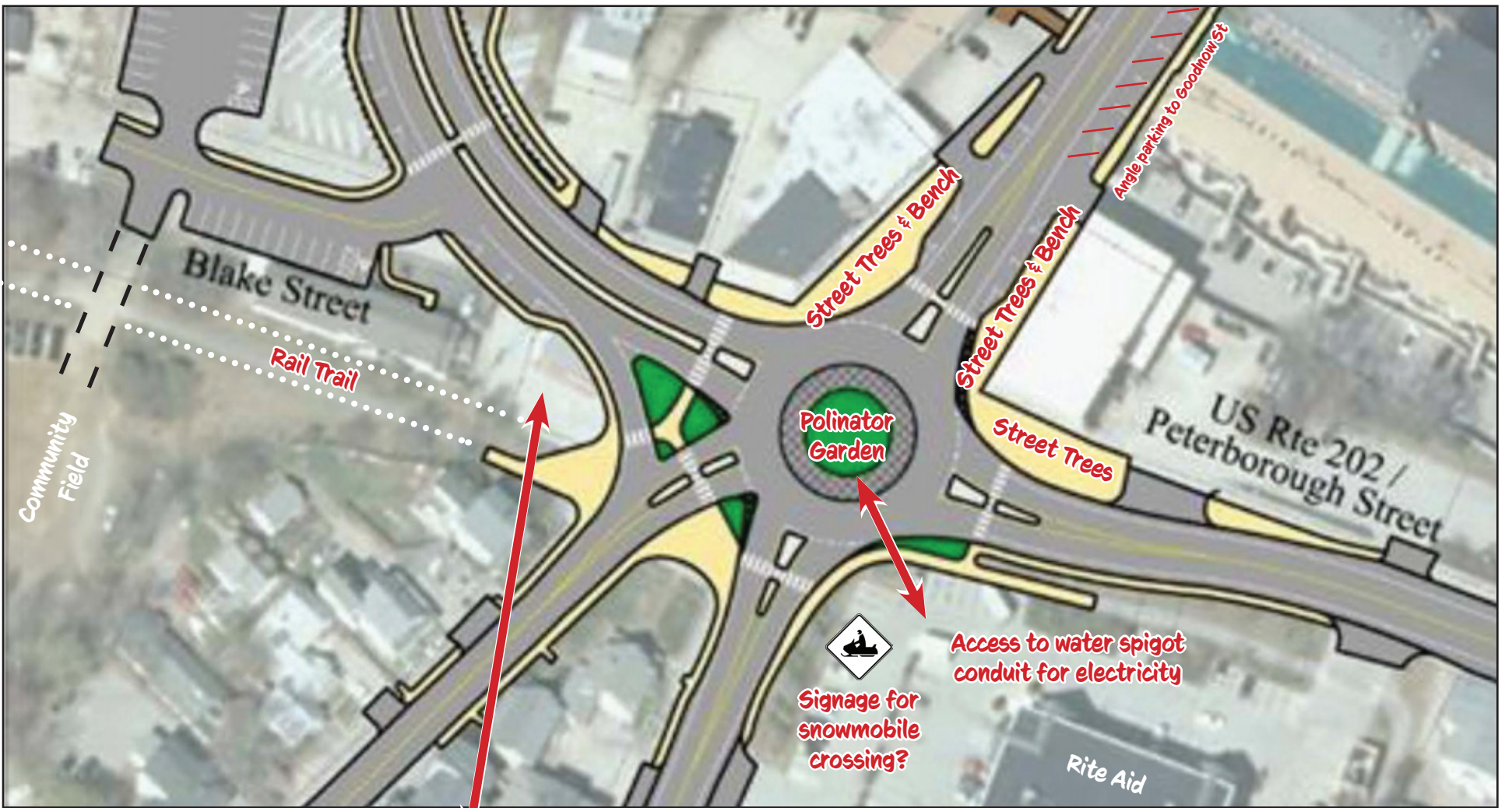
13'-6" PARK LIGHT ASSEMBLY



BOLLARD



Roundabout & Welcome Center



Welcome Kiosk and parklet benches

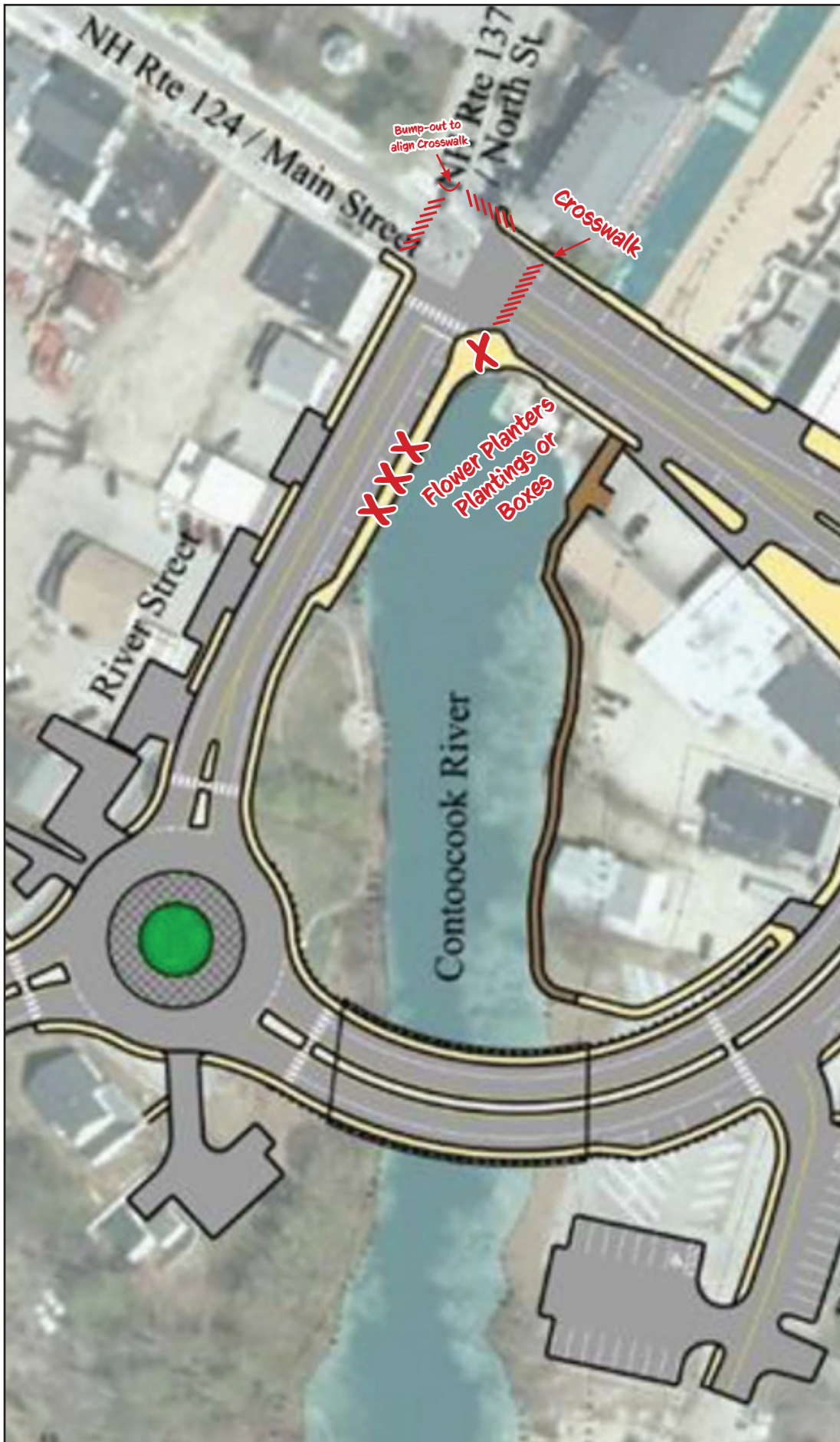
Information:
Events, natural & cultural history



Existing benches; Alderman Park benches and trough



Sidewalks / Crosswalks and Fencing



Crosswalks: differentiated by color or texture

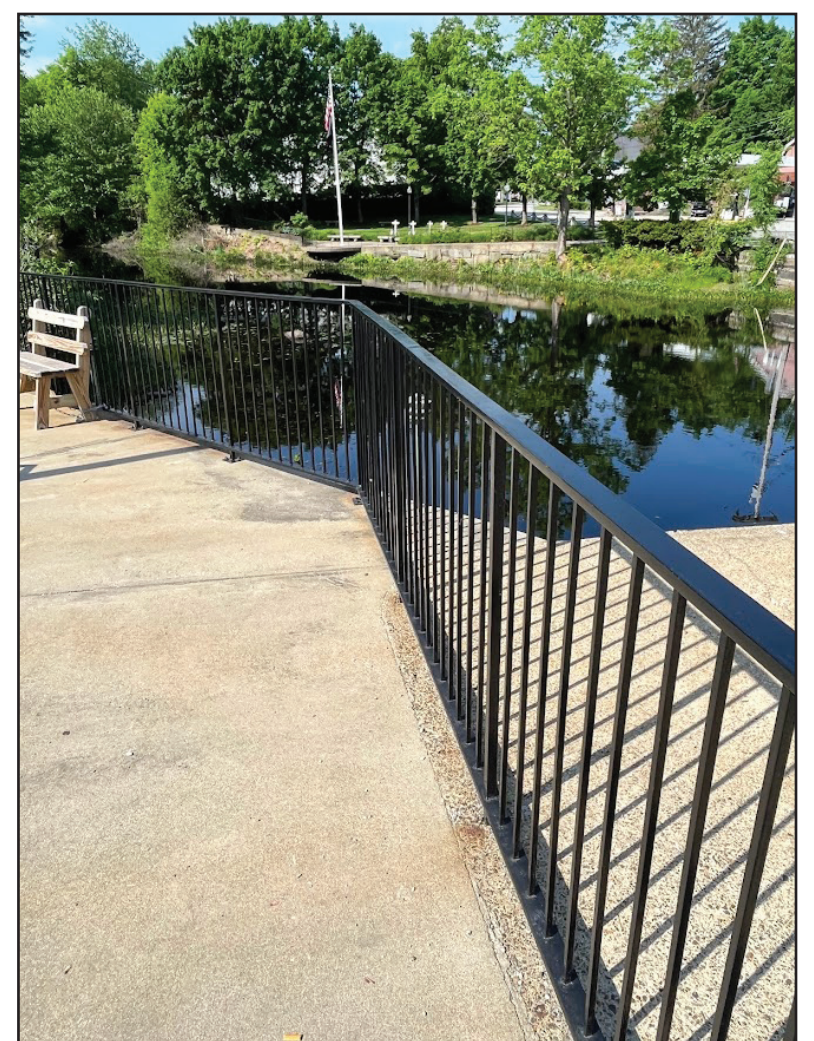
Raised crosswalks all locations



Complete Streets Compliant with Town of Jaffrey Complete Streets Policy

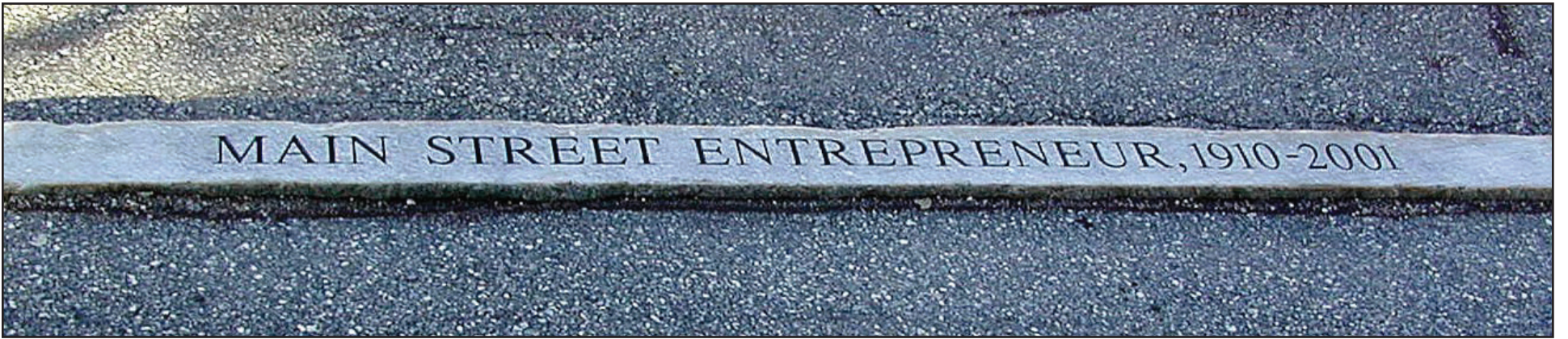
Sidewalks - concrete granite curbing

Tie in fencing to existing



Wayfinding Signage

to be developed for during and post construction



Imprint larger granite curbs with historical notes



Way-finding signs black with gold lettering

Consistent logo-ing



Parking Plan at Community Field

